



PT-100

Handheld Tonometer

Parts Manual

Reichert

PT100 Handheld Tonometer
(Refer to Figures 1 - 4)



PT100 Charging Base
(Refer to Figure 5)



PT100 Infrared Printer

Table Of Contents

Introduction	4
Warnings and Cautions	5
PT100 Assembly - Figure 1	6
Parts List - Figure 1	7
PT100 Optical Assembly - Figure 2	8
Parts List - Figure 2	9
PT100 Optical Assembly - Figure 2A	10
Parts List - Figure 2A	11
PT100 LCD /Pushbutton Assembly - Figure 3	12
Parts List - Figure 3	13
PT100 Piston Assembly - Figure 4	14
Parts List - Figure 4	15
PT100 Charging Base Assembly - Figure 5	16
Parts List - Figure 5	17
PT100 Accessories Parts List	17
Numerical Index (of Parts in PT100)	18-20
Product Notes	21

© 2004 Reichert, Inc.
All rights reserved.

No part of this publication may be reproduced, stored in a retrieval system, or transmitted in any form or by any means, electronic, mechanical, recording, or otherwise, without the prior written permission of Reichert, Inc.

Introduction

This manual provides illustrated drawings and parts lists which aid in identifying and locating parts in the Reichert PT100. The following Reichert PT100 part number is represented in this manual:

13850 PT100, Handheld Tonometer (115 - 230 Volt Model)

Parts Lists

To determine the part number of an item that is visually known:

- 1 Visually locate the part by referring to the appropriate figure and note the item number.
- 2 Using the item number, refer to the associated parts list to find the part number of that item.

To obtain a visual representation of an item that is known only by the part number:

- 1 Locate the part number in the Numerical Index and record the figure number and item number for that part.
- 2 Refer to the associated figure and item number.

Description: Each item is given a specific name which identifies it. Once a name for an item is used, it is not used for a different item. All dimensions for hardware items (screws, washers, etc.) which do not have units listed, are referenced in inches.

Configuration: Each parts list has a Config. column which indicates items used on a specific production lot of the PT100. The letters (such as X, Y, or Z) which are used in the Config. column, refer to production revisions of the unit. When an item references a Config. letter, that item applies only to the specific model of the PT100 with that Config. letter. Any item without a Config. letter, is used in all models of the PT100.

NOTE: The Config. number is not a reference to a revision level written on the dataplate of the PT100.

Quantity: All parts have a quantity listed for the item number of that figure. When REF is shown for the quantity, the item is given a quantity in a different figure.

Numerical Index

This Numerical Index provides a numerically ordered list of all items within the PT100.

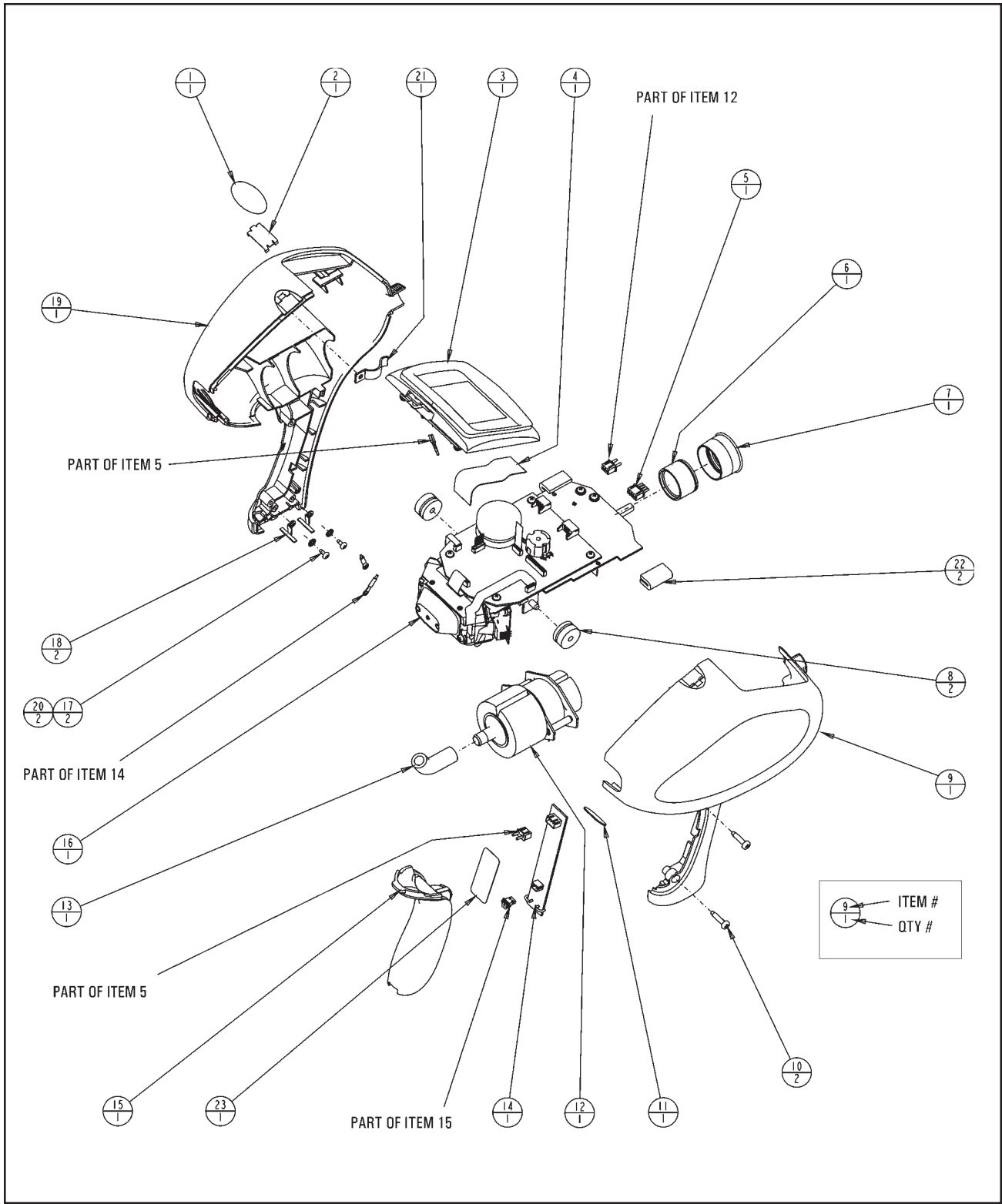
Warnings & Cautions

Reichert, Inc. is not responsible for the safety and reliability of this instrument when:

- Assembly, disassembly, repair or modification is made by unauthorized dealers or persons
- Replacement parts not manufactured by Reichert, Inc. are used in this instrument
- Instrument is not used in accordance with the User's Guide.

CAUTION: ANY REPAIR OR SERVICE TO THIS PRODUCT MUST BE PERFORMED BY EXPERIENCED PERSONNEL THAT ARE TRAINED BY REICHERT, INC. SO THAT CORRECT OPERATION OF THIS INSTRUMENT IS MAINTAINED.

CAUTION: THE INTERNAL CIRCUITS OF THIS INSTRUMENT HAVE ELECTROSTATIC DISCHARGE SENSITIVE (ESDS) DEVICES AND ARE SENSITIVE TO STATIC HIGH VOLTAGES STORED IN AND TRANSFERRED BY THE HUMAN BODY. OBSERVE CORRECT ESDS PRECAUTIONS OR DAMAGE MAY OCCUR TO THE ELECTRONIC CIRCUITS RESULTING IN MALFUNCTION OF THIS INSTRUMENT.

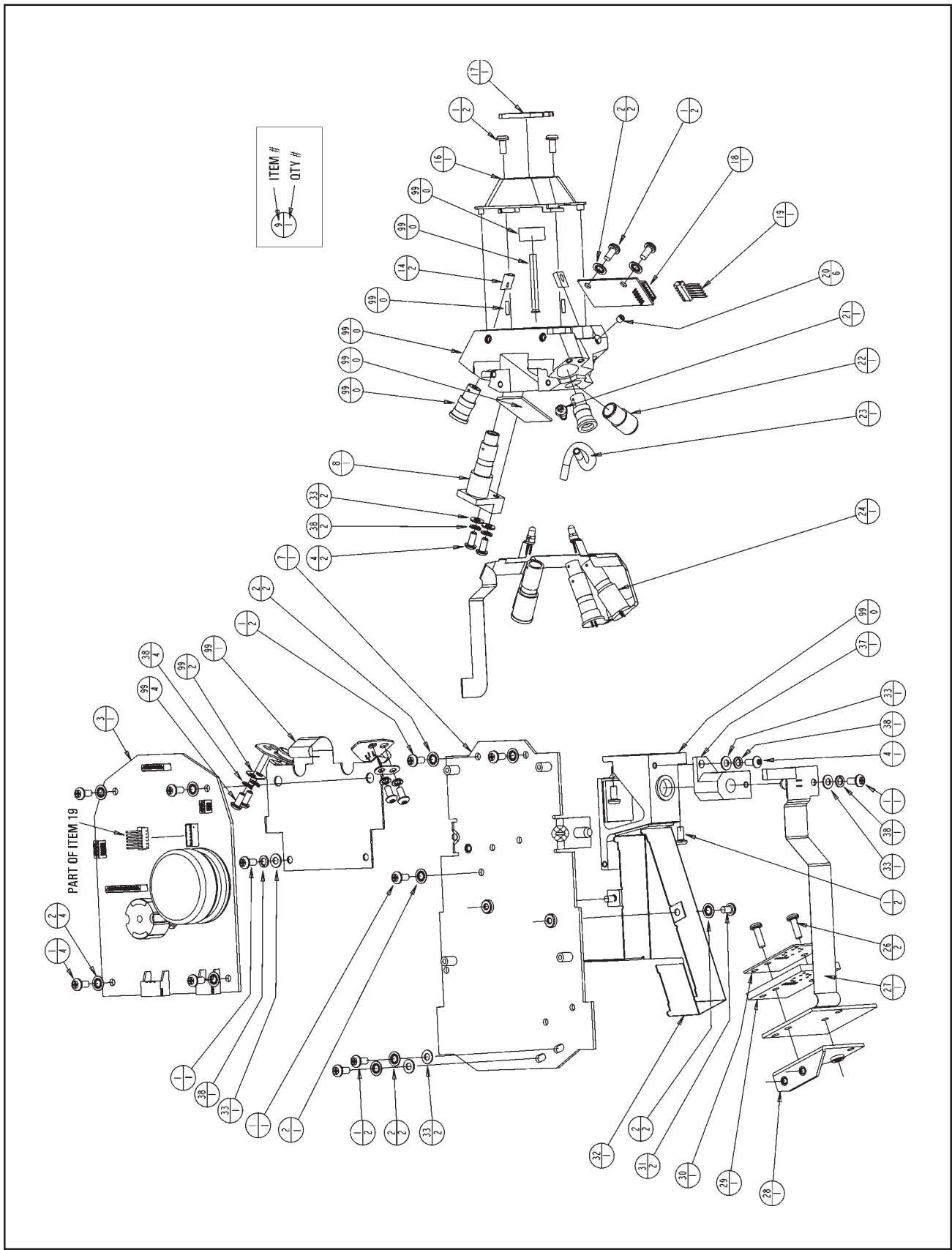


PT100 Assembly - Figure 1

Parts List - Figure 1

Item#	Config.	Part#	Description	Quantity
		13850	PT100 ASSEMBLY	Ref
	X	13851	PT100 HANDHELD TONOMETER (Refer to Figures 1-4)	Ref
	Y	13852	PT100 CHARGING BASE (Refer to Figure 5)	Ref
	Z	13853	PT100 INFRARED PRINTER	Ref
1		13950-016	LABEL, REICHERT LOGO (REPLD BY ITEM 1A)	1
1A		13851-112	LABEL, REICHERT LOGO (ECO 30224)	1
2		13851-025	RETAINER, COVER LOCKING	1
3		13851-855	LCD/PUSHBUTTON ASSEMBLY (Refer to Figure 3)	1
4		13851-927	FLAT CABLE - LCD DISPLAY	1
5		13851-932	POWER HARNESS ASSEMBLY	1
6		13851-858	EYEPIECE ASSEMBLY	1
7		13851-021	EYE GUARD	1
8		13851-032	GROMMET, ISOLATION	2
9		13851-001	COVER, RIGHT SIDE	1
10		X76283	TPGSCR, PNH, PT-6 X .625, PH, SST	2
11		13851-608	WINDOW, IRDA	1
12		13851-861*	PISTON SUB-ASSEMBLY (Refer to Figure 4)	1
13		13851-016	TUBING, POLYURETHANE	1
14		13851-923	MONITOR PCB ASSY WITH HARNESS	1
15		13851-853	BATTERY/HANDLE ASSEMBLY	1
16		13851-851	OPTICAL ASSEMBLY 13851 S/N <10900 (Refer to Figure 2)	1
16A		13851-868	OPTICAL ASSEMBLY 13851 S/N >11000 (Refer to Figure 2A)	1
17		X76209	TPGSCR, PNH, PT-4, X .25, PH, STL	2
18		13851-029	CONTACT, CHARGING-STATIONARY	2
19		13851-002	COVER, LEFT SIDE	1
20		X16303	WSHR, INTT, 4, R (.016 X .265) STL	2
21		WMHW38017	TENSION CLIP	1
22		13851-058	ISOLATOR, RUBBER	2
23		13851-033	LABEL, DATA PLATE (REPLD BY ITEM 23A)	1
23A		13851-033-001	LABEL, DATA PLATE (ECO 30089)	1

Note: P/N 13850 includes; P/N's 13851, 13852, 13853 packaged together into its carrying case.
 * = Replacement of this part, requires a complete recalibration of the unit before its normal use.

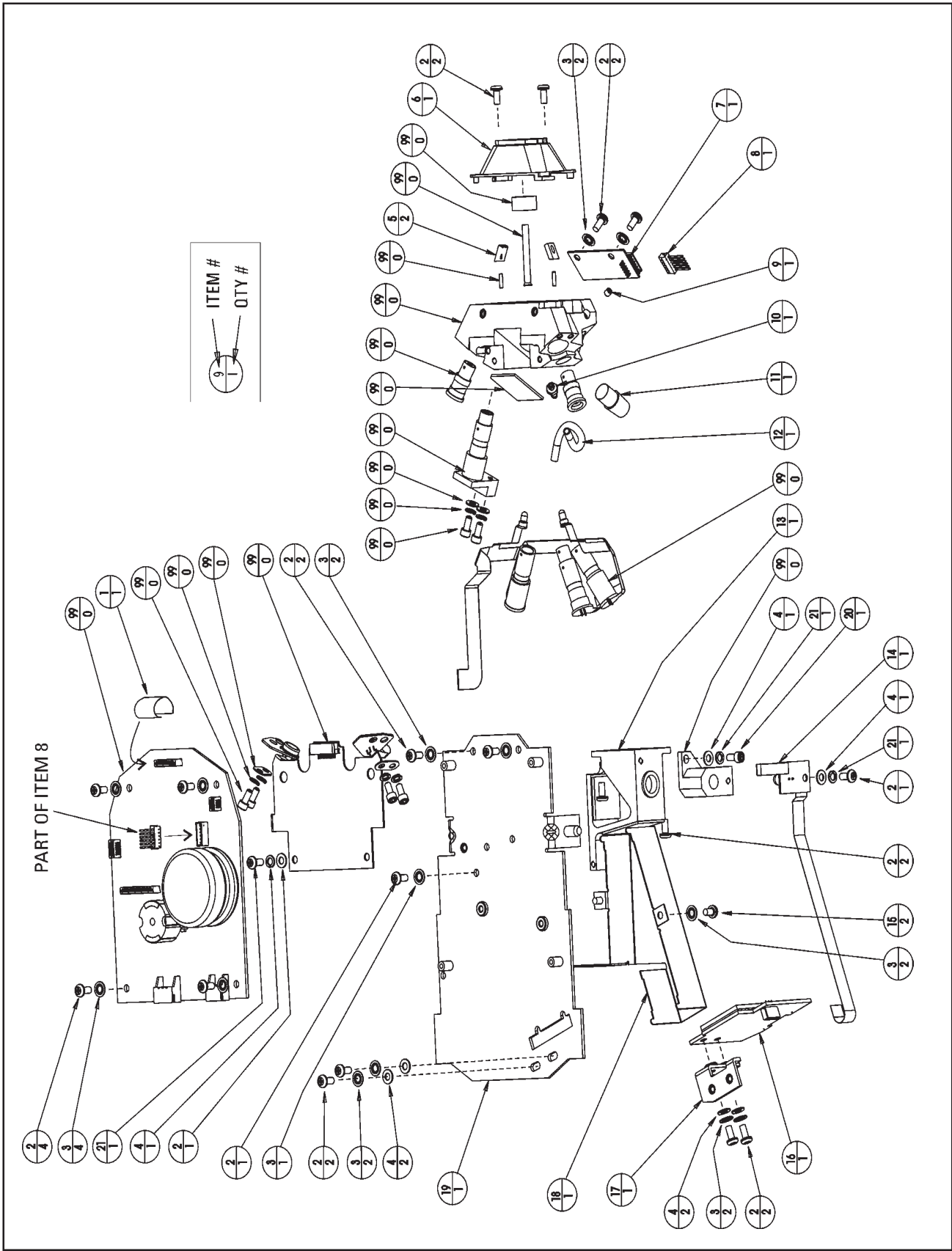


PT100 Optical Assembly - Figure 2

Parts List - Figure 2

Item#	Config.	Part#	Description	Quantity
	X	13851-851	OPTICAL ASSEMBLY (Also refer to Figure 1)	Ref
1		X76082	MSCR, PNH, 4-40 X .25, PH, SST	17
2		X16303	WSHR, INTT, 4, R(.016 x .265) STL	13
3		13851-921*	CONTROL PCB ASSEMBLY	1
4		X34590	MSCR, BTNH, 4-40 X .250, SPLN, STL	3
5			DELETED PART	2
6			DELETED PART	1
7		13851-073	OPTICAL SUPPORT	1
8		13851-857*	APP DETECTOR TUBE ASSY	1
9			DELETED PART	2
10			DELETED PART	1
11			DELETED PART	1
12			DELETED PART	2
13			DELETED PART	1
14		13851-059	MOUNT, LED	2
15			DELETED PART	1
16		13851-008	COVER, NOSEPIECE (REPLD BY ITEM 16A)	1
16A		13851-870	ASSY, NOSEPIECE COVER (ECO 30169)	1
17		13851-870	WINDOW ASSY, PATIENT (REPLD BY ITEM 16A)	1
18		13851-924	IRDA PCD BOARD ASSEMBLY	1
19		13851-930	HARNESS, IRDA	1
20		X20590	SSCR,CUP,4-40 X .125,SKT,STL	6
21		13900-046	ADAPTER, TUBING	1
22		13851-090	FITTING, TUBING	1
23		13851-094	PRESSURE SENSING TUBE	1
24		13851-926*	ILLUMINATION TUBE ASSEMBLY	1
26		X76084	MSCR, PNH, 4-40 X .38, PH, SST	2
27		13851-925	HEADS-UP/FIXATION FLEX PCB ASSY	1
28		13851-064	MOUNT, HUD	1
29		13851-077	SPACER, HEADS-UP PCB	1
30		13851-078	OVERLAY, HEADS-UP DISPLAY	1
31		X76081	MSCR, PNH, 4-40 x .19, PH, SST	2
32		13851-063	LIGHT SHIELD, HUD	1
33		X53190	WSHR, FL, .125, A (.022 X .250) STL	7
37		13851-867	FIXATION APERTURE MOUNT ASSEMBLY	1
38		X16212	WSHR, SPLK, 4,L (.02 X .20) STL	9
99		N/A	PART NOT AVAILABLE - USE P/N 13851-851	AR

* = Replacement of this part, requires a complete recalibration of the unit before its use.

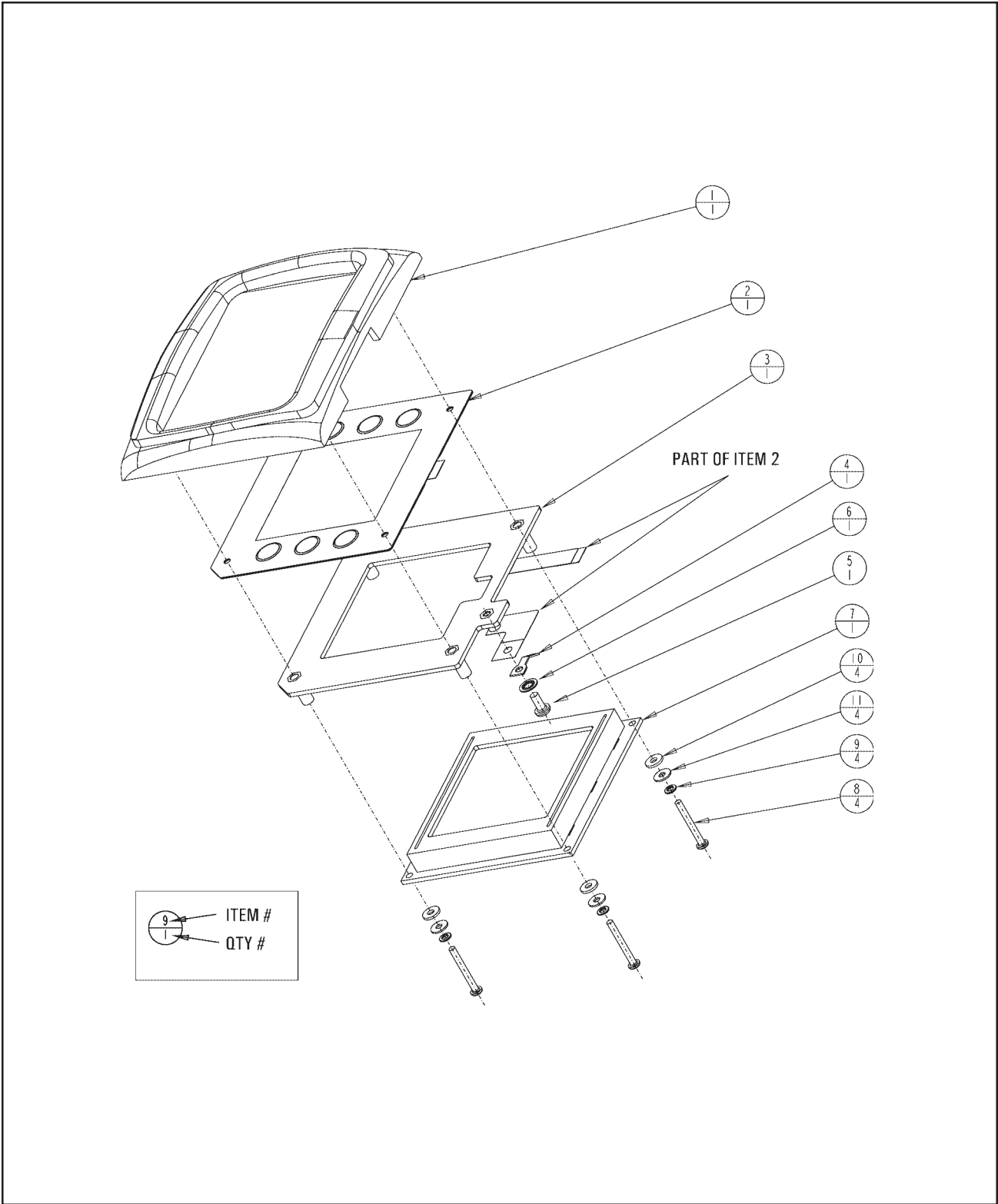


PT100 Optical Assembly - Figure 2A

Parts List - Figure 2A

Item#	Config.	Part#	Description	Quantity
	X	13851-868*	OPTICAL ASSEMBLY (Also refer to Figure 1)	Ref
1		13851-935	CABLE, FLAT FILM - 12 POS	1
2		X76082	MSCR, PNH, 4-40 X .25, PH, SST	19
3		X16303	WSHR, INTT, 4, R(.016 x .265) STL	15
4		X53190	WSHR, FL, .125, A (.022 X .250) STL	7
5		13851-059	MOUNT, LED	2
6		13851-870	PATIENT WINDOW ASSY	1
7		13851-924	IRDA PCD BOARD ASSEMBLY	1
8		13851-930	HARNESS, IRDA	1
9		X20590	SSCR,CUP,4-40 X .125,SKT,STL	6
10		13900-046	ADAPTER, TUBING	1
11		13851-090	FITTING, TUBING	1
12		13851-094	PRESSURE SENSING TUBE	1
14		13851-937	HEADS-UP/FIXATION FLEX PCB ASSY	1
15		X76081	MSCR, PNH, 4-40 X .19, PH, SST	2
16		13851-936	HUD PC BOARD ASSY	1
17		13851-097	MOUNT, HUD	1
18		13851-063	LIGHT SHIELD, HUD	1
19		13851-098	OPTICAL SUPPORT	1
20		X36156	MSCR, CAP, 4-40 x .25, SKT, SST	1
21		X16212	WSHR, SPLK, 4,L (.02 X .20) STL	3
99		N/A	PART NOT AVAILABLE - USE P/N 13851-868	AR

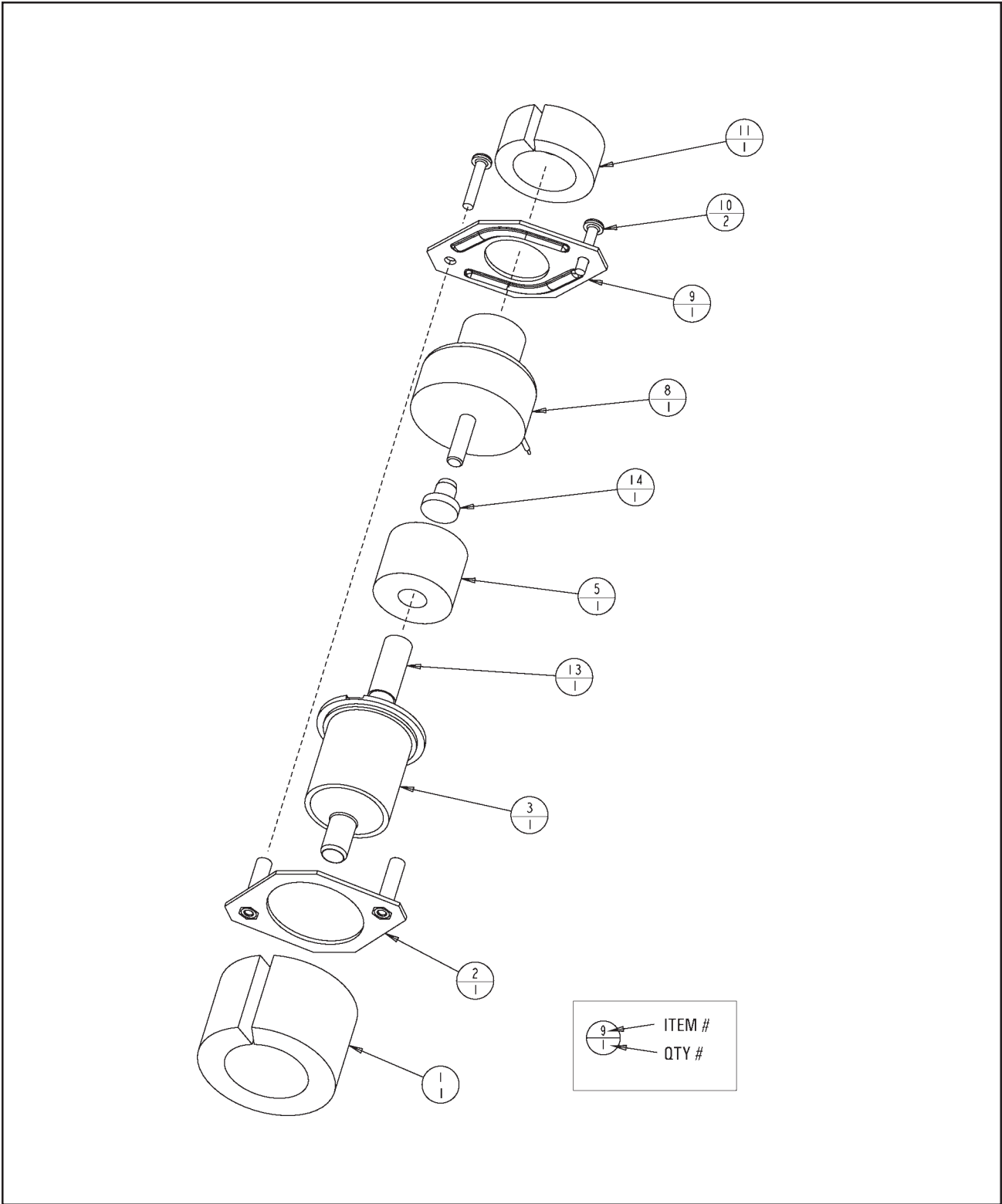
* = Replacement of this part, requires a complete recalibration of the unit before its use.



PT100 LCD / Pushbutton Assembly - Figure 3

Parts List - Figure 3

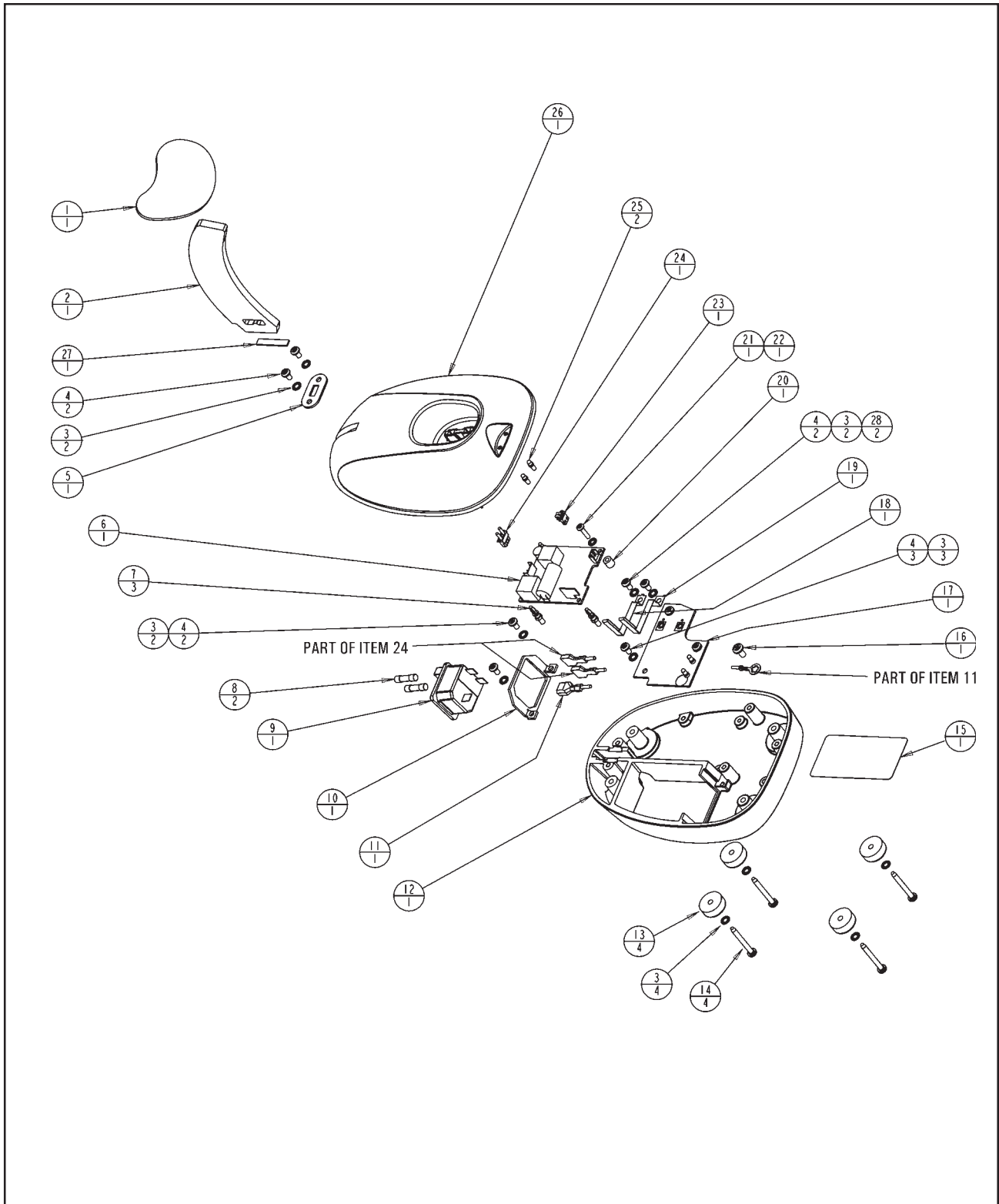
Item#	Config.	Part#	Description	Quantity
	X	13851-855	LCD / PUSHBUTTON ASSEMBLY (Also refer to Figure 1)	Ref
1		13851-007	BEZEL, DISPLAY	1
2		13851-402	PUSH BUTTON/GRAPHIC OVERLAY	1
3		13851-022	SUPPORT, PUSH BUTTON	1
4		WTEL20016	TERMINAL, FAST-ON - .110	1
5		X76082	MSCR, PNH, 4-40 X .25, PH, SST	1
6		X16303	WSHR, INTT, 4, R (.016 x .265) STL	1
7		13851-401	LCD, 128 X 128	1
8		X76079	MSCR, PNH, 2-56 x .75, PH, SST	4
9		X53477	WSHR, SPLK, 2, R (.02 X .17) STL	4
10		X76281	WSHR, FL, .098, SPCL (.032 x .25) NYL	4
11		X16000	WSHR, FL, 2, R (.02 x .25) STL	4



PT100 Piston Assembly - Figure 4

Parts List - Figure 4

Item#	Config.	Part#	Description	Quantity
	X	13851-861	PISTON ASSEMBLY (Also refer to Figure 1)	Ref
1		13851-088	CYLINDER WRAP	1
2		13851-044	PLATE ASSY, SOLENOID	1
3		13851-087	CYLINDER, 1.10 DIA	1
5		13851-014	PISTON, 1.10 DIA	1
8		13851-403	HARNESS ASS'Y, LINEAR SOLENOID	1
9		13851-043	PLATE, SOLENOID	1
10		X76107	MSCR, PNH, 6-32 X .75, PH, SST	2
11		13851-050	SOLENOID WRAP	1
13		13851-065	SPRING, COMPRESSION (REPLD BY ITEM 13A)	1
13A		13851-095	SPRING, COMPRESSION (ECO 21875)	1
14		13851-079	CAP, PROTECTIVE	1



PT100 Charging Base Assembly - Figure 5

Parts List - Figure 5

Item#	Config.	Part#	Description	Quantity
	Y	13852-800	CHARGING BASE ASEMBLY	Ref
1		13852-004	SADDLE	1
2		13852-003	ARM, SUPPORT	1
3		X16306	WSHR, INTT, 6, R (.018 x .285) STL	13
4		X76100	MSCR, PNH, 6-32 X .25, PH, SST	9
5		13852-012	CLAMP, SUPPORT ARM	1
6		13852-401	POWER SUPPLY-BASE BATTERY CHARGER	1
7		WMHW18067	SUPPORT, PC BOARD - MINI	3
8		WFAG20023	FUSE, 5x20mm, .8AMP, SLO-BLO	2
9		WSOC30008	SOCKET, AC POWER INLET W/FUSE	1
10		13852-007	BRACKET, FUSE HOLDER	1
11		13852-924	HARNESS, BASE GROUND	1
12		13852-011	SUPPORT, BASE - PAINTED	1
13		12621-054	BUMPER, RECESSED	4
14		X76279	TPGSCR, PNH, PT-6 x 1.25, PH, SST	4
15		13852-010	LABEL, DATA PLATE	1
16		X76121	MSCR, PNH, 8-32 X .31, PH, SST	1
17		13852-921	PC BOARD, PWR CONNECTION TO HEAD	1
18		13852-005	CONTACT, CHARGING- SHORT	1
19		13852-009	CONTACT, CHARGING - TALL	1
20		WMHW18069	SPACER, #4 SCREW, .25 LG	1
21		X76086	MSCR, PNH, 4-40 x .50, PH, SST	1
22		X16303	WSHR, INTT, 4, R (.016 x .265) STL	1
23		13852-923	HARNESS, LOW VOLTAGE	1
24		13852-922	HARNESS, HIGH VOLTAGE	1
25		WMHW37003	LIGHT PIPE, CLEAR .250LG	2
26		13852-002	COVER, BASE	1
27		13852-013	GASKET, SUPPORT ARM	1
28		X53191	WSHR, FL, A, 0.156 (0.035 x 0.312) STL	2

PT100 Accessories Parts List

PART#	ACCESSORY DESCRIPTION
13850-001	PT100 DUST COVER
13850-101	USER MANUAL
13850-102	PT100 REFERENCE CARD (FOR 13851 S/N <10900)
13850-104	PT100 REFERENCE CARD (FOR 13851 S/N >11000)
13850-303	SHIPPING BOX
13850-398	REPLACEMENT CARRYING CASE, FOAM, AND SHIPPING BOX
WCBL10018	POWER CORD (USA)
WCBL10027	POWER CORD (EURO)
12441	PRINTER PAPER

Numerical Index

Part#	Description	Fig#	Item#
13850	PT100 ASSEMBLY	1	
13851	PT100 HANDHELD TONOMETER (Refer to Figures 1-4)	1	
13852	PT100 CHARGING BASE (Refer to Figure 5)	1	
13853	PT100 INFRARED PRINTER	1	
12621-054	BUMPER, RECESSED	5	13
13851-001	COVER, RIGHT SIDE	1	9
13851-002	COVER, LEFT SIDE	1	19
13851-007	BEZEL, DISPLAY	3	1
13851-008	COVER, NOSEPIECE (REPLD BY ITEM 16A)	2	16
13851-014	PISTON, 1.10 DIA	4	5
13851-016	TUBING, POLYURETHANE	1	13
13851-021	EYE GUARD	1	7
13851-022	SUPPORT, PUSH BUTTON	3	3
13851-025	RETAINER, COVER LOCKING	1	2
13851-029	CONTACT, CHARGING-STATIONARY	1	18
13851-032	GROMMET, ISOLATION	1	8
13851-033	LABEL, DATA PLATE (REPLD BY ITEM 23A)	1	23
13851-033-001	LABEL, DATA PLATE (ECO 30089)	1	23A
13851-043	PLATE, SOLENOID	4	9
13851-044	PLATE ASSY, SOLENOID	4	2
13851-050	SOLENOID WRAP	4	11
13851-058	ISOLATOR, RUBBER	1	22
13851-059	MOUNT, LED	2	14
13851-059	MOUNT, LED	2A	5
13851-063	LIGHT SHIELD, HUD	2	32
13851-063	LIGHT SHIELD, HUD	2A	18
13851-064	MOUNT, HUD	2	28
13851-065	SPRING, COMPRESSION (REPLD BY ITEM 13A)	4	13
13851-066	DELETED PART	2	11
13851-073	OPTICAL SUPPORT	2	7
13851-076	DELETED PART	2	5
13851-077	SPACER, HEADS-UP PCB	2	29
13851-078	OVERLAY, HEADS-UP DISPLAY	2	30
13851-079	CAP, PROTECTIVE	4	14
13851-087	CYLINDER, 1.10 DIA	4	3
13851-088	CYLINDER WRAP	4	1
13851-090	FITTING, TUBING	2	22
13851-090	FITTING, TUBING	2A	11
13851-094	PRESSURE SENSING TUBE	2	23
13851-094	PRESSURE SENSING TUBE	2A	12
13851-095	SPRING, COMPRESSION (ECO 21875)	4	13A
13851-097	MOUNT, HUD	2A	17
13851-098	OPTICAL SUPPORT	2A	19
13851-112	LABEL, REICHERT LOGO (ECO 30224)	1	1A
13851-401	LCD, 128 X 128	3	7
13851-402	PUSH BUTTON/GRAPHIC OVERLAY	3	2
13851-403	HARNESS ASS'Y, LINEAR SOLENOID	4	8
13851-601	DELETED PART	2	13
	- CONTINUED -		

Numerical Index (Continued)

Part#	Description	Fig#	Item#
13851-602	DELETED PART	2	10
13851-608	WINDOW, IRDA	1	11
13851-851	OPTICAL ASSEMBLY	1	16
13851-851	OPTICAL ASSEMBLY (Also refer to Figure 1)	2	Ref
13851-853	BATTERY/HANDLE ASSEMBLY	1	15
13851-855	LCD/PUSHBUTTON ASSEMBLY (Refer to Figure 3)	1	3
13851-855	LCD / PUSHBUTTON ASSEMBLY (Also refer to Figure 1)	3	Ref
13851-857*	APP DETECTOR TUBE ASSY	2	8
13851-858	EYEPIECE ASSEMBLY	1	6
13851-861	PISTON ASSEMBLY (Also refer to Figure 1)	4	
13851-861*	PISTON SUB-ASSEMBLY (Refer to Figure 4)	1	12
13851-863	DELETED PART	2	9
13851-867	FIXATION APERTURE MOUNT ASSEMBLY	2	37
13851-868	OPTICAL ASSEMBLY	1	16A
13851-868*	OPTICAL ASSEMBLY (Also refer to Figure 1)	2A	Ref
13851-870	ASSY, NOSEPIECE COVER (ECO 30169)	2	16A
13851-870	WINDOW ASSY, PATIENT (REPLD BY ITEM 16A)	2	17
13851-870	PATIENT WINDOW ASSY	2A	6
13851-921*	CONTROL PCB ASSEMBLY	2	3
13851-922*	DELETED PART	2	6
13851-923	MONITOR PCB ASSY WITH HARNESS	1	14
13851-924	IRDA PCD BOARD ASSEMBLY	2	18
13851-924	IRDA PCD BOARD ASSEMBLY	2A	7
13851-925	HEADS-UP/FIXATION FLEX PCB ASSY	2	27
13851-926*	ILLUMINATION TUBE ASSEMBLY	2	24
13851-927	FLAT CABLE - LCD DISPLAY	1	4
13851-930	HARNESS, IRDA	2	19
13851-930	HARNESS, IRDA	2A	8
13851-932	POWER HARNESS ASSEMBLY	1	5
13851-935	CABLE, FLAT FILM - 12 POS	2A	1
13851-936	HUD PC BOARD ASSY	2A	16
13851-937	HEADS-UP/FIXATION FLEX PCB ASSY	2A	14
13852-002	COVER, BASE	5	26
13852-003	ARM, SUPPORT	5	2
13852-004	SADDLE	5	1
13852-005	CONTACT, CHARGING- SHORT	5	18
13852-007	BRACKET, FUSE HOLDER	5	10
13852-009	CONTACT, CHARGING - TALL	5	19
13852-010	LABEL, DATA PLATE	5	15
13852-011	SUPPORT, BASE - PAINTED	5	12
13852-012	CLAMP, SUPPORT ARM	5	5
13852-013	GASKET, SUPPORT ARM	5	27
13852-401	POWER SUPPLY-BASE BATTERY CHARGER	5	6
13852-800	CHARGING BASE ASEMBLY	5	Ref
13852-921	PC BOARD, PWR CONNECTION TO HEAD	5	17
13852-922	HARNESS, HIGH VOLTAGE	5	24
13852-923	HARNESS, LOW VOLTAGE	5	23
13852-924	HARNESS, BASE GROUND	5	11
	- CONTINUED -		

Numerical Index (Continued)

Part#	Description	Fig#	Item#
13900-046	ADAPTER, TUBING	2	21
13900-046	ADAPTER, TUBING	2A	10
13950-016	LABEL, REICHERT LOGO (REPLD BY ITEM 1A)	1	1
WFAG20023	FUSE, 5x20mm, .8AMP, SLO-BLO	5	8
WMHW18067	SUPPORT, PC BOARD - MINI	5	7
WMHW18069	SPACER, #4 SCREW, .25 LG	5	20
WMHW37003	LIGHT PIPE, CLEAR .250LG	5	25
WMHW38017	TENSION CLIP	1	21
WSOC30008	SOCKET, AC POWER INLET W/FUSE	5	9
WTEL20016	TERMINAL, FAST-ON - .110	3	4
X16000	WSHR, FL, 2, R (.02 x .25) STL	3	11
X16212	WSHR, SPLK, 4,L (.02 X .20) STL	2	38
X16212	WSHR, SPLK, 4,L (.02 X .20) STL	2A	21
X16303	WSHR, INTT, 4, R (.016 X .265) STL	1	20
X16303	WSHR, INTT, 4, R(.016 x .265) STL	2	2
X16303	WSHR, INTT, 4, R(.016 x .265) STL	2A	3
X16303	WSHR, INTT, 4, R (.016 x .265) STL	3	6
X16303	WSHR, INTT, 4, R (.016 x .265) STL	5	22
X16306	WSHR, INTT, 6, R (.018 x .285) STL	5	3
X20590	SSCR,CUP,4-40 X .125,SKT,STL	2	20
X20590	SSCR,CUP,4-40 X .125,SKT,STL	2A	9
X34590	MSCR, BTNH, 4-40 X .250, SPLN, STL	2	4
X36156	MSCR, CAP, 4-40 x .25, SKT, SST	2A	20
X53190	WSHR, FL, .125, A (.022 X .250) STL	2	33
X53190	WSHR, FL, .125, A (.022 X .250) STL	2A	4
X53191	WSHR, FL, A, 0.156 (0.035 x 0.312) STL	5	28
X53477	WSHR, SPLK, 2, R (.02 X .17) STL	3	9
X76079	MSCR, PNH, 2-56 x .75, PH, SST	3	8
X76081	MSCR, PNH, 4-40 x .19, PH, SST	2	31
X76081	MSCR, PNH, 4-40 X .19, PH, SST	2A	15
X76082	MSCR, PNH, 4-40 X .25, PH, SST	2	1
X76082	MSCR, PNH, 4-40 X .25, PH, SST	2A	2
X76082	MSCR, PNH, 4-40 X .25, PH, SST	3	5
X76084	MSCR, PNH, 4-40 X .38, PH, SST	2	26
X76086	MSCR, PNH, 4-40 x .50, PH, SST	5	21
X76100	MSCR, PNH, 6-32 X .25, PH, SST	5	4
X76107	MSCR, PNH, 6-32 X .75, PH, SST	4	10
X76121	MSCR, PNH, 8-32 X .31, PH, SST	5	16
X76209	TPGSCR, PNH, PT-4, X .25, PH, STL	1	17
X76243	DELETED PART	2	12
X76279	TPGSCR, PNH, PT-6 x 1.25, PH, SST	5	14
X76281	WSHR, FL, .098, SPCL (.032 x .25) NYL	3	10
X76283	TPGSCR, PNH, PT-6 X .625, PH, SST	1	10

Product Notes



**Reichert Ophthalmic Instruments
Reichert, Inc.**

3374 Walden Ave
Depew, NY 14043
USA

Toll Free: 888-849-8955
Phone: 716-686-4500
email: info@reichert.com
www.reichertoi.com

Reichert GmbH
Hubertusstrasse 2
D-82229 Seefeld
Germany
Tel: +49-8152-993530

ISO-9001 Certified