

# Miscellaneous magnifiers and accessories

Illuminated and non-illuminated magnifiers for technical applications or also for reduced vision. Special magnifiers being conveniently designed for specific applications. Inexpensive magnifiers for hobby, leisure or as give-away articles. Accessories who really help the user. See for yourself.

ILLUMINATED STAND MAGNIFIERS	4.02
ILLUMINATED HAND-HELD MAGNIFIERS	4.03
READING MAGNIFIERS	4.03
FOLDING MAGNIFIERS	4.04 – 4.05
LINEN TESTERS	4.05
EYE CLAMPED MAGNIFIERS	4.06
STAND AND MEASURING MAGNIFIERS	4.07
TECHNICAL HANDLE MAGNIFIERS	4.08
TECHNICAL SET	4.08
POCKET MICROSCOPES	4.08 – 4.09
BINOCULAR HEAD MAGNIFIERS	4.09
SPECIAL MAGNIFIERS	4.10 – 4.11
READING STANDS	4.12



## ILLUMINATED STAND MAGNIFIERS

### STANDARD H

220V EURO-PLUG  
Mains operated with halogen lighting, separate transformer cable, aspheric lightweight lens



with red guiding line,  
8x / Ø 35mm  
**Ref. S14810**

with red guiding line,  
6x / Ø 55mm  
**Ref. S14910**

with red guiding line,  
5x / Ø 60mm  
**Ref. S15010**

3,5x / Ø 75mm  
**Ref. S15210**

3x / □ 100x75mm  
**Ref. S15410**

2,5x / □ 100x50mm  
**Ref. S15310**

### Parts

transformer cable,  
halogen screw bulb  
**Ref. S30300**

halogen screw bulb,  
pack of 3  
**Ref. S30400**

### STANDARD

Battery operated with incandescent bulb, for 2x size C batteries, aspheric lightweight lens



8x / Ø 35mm  
**Ref. S14800**

6x / Ø 55mm  
**Ref. S14900**

5x / Ø 60mm  
**Ref. S15000**

3,5x / Ø 75mm  
**Ref. MS15200**

3x / □ 100x75mm  
**Ref. S15400**

2,5x / □ 100x50mm  
**Ref. S15300**

### Parts

STANDARD alkaline  
batteries size C  
**Ref. S15810**

incandescent bulb for  
STANDARD, pack of 10  
**Ref. S15900**

### TORCH

Battery operated with incandescent bulb, for 2x size C batteries



aplanatic glass lens,  
10x / Ø 30mm  
**Ref. S16300**

aplanatic glass lens,  
8x / Ø 30mm  
**Ref. S16200**

aspheric glass lens,  
5x / Ø 60mm  
**Ref. S16100**

aspheric lightweight  
lens, 5x / Ø 60mm  
**Ref. S16110**

biconvex glass lens,  
3,5x / Ø 60mm  
**Ref. S16000**

### Parts

TORCH alkaline  
batteries size C  
**Ref. S15810**

incandescent bulb for  
TORCH, pack of 10  
**Ref. S15900**

measuring mm/in scale  
on glass plate for  
S16300, S16200  
**Ref. S16400**


**ILLUMINATED HAND-HELD MAGNIFIERS**
**READING MAGNIFIERS**
**MOBIL**

Battery operated with incandescent bulb, for 2x size AA batteries, aspheric lightweight lens with coating



14x / Ø 35mm  
**Ref. S07063**

12x / Ø 35mm  
**Ref. S07062**

10x / Ø 35mm  
**Ref. S07061**

8x / Ø 35mm  
**Ref. S07060**

**Parts and case**

MOBIL alkaline batteries size AA, pack of 3  
**Ref. S15500**

incandescent bulb for MOBIL, pack of 10  
**Ref. S12990**



soft case for MOBIL  
**Ref. S11960**

**TECH-LINE**

Battery operated with LED lighting



biconvex glass lens with plano-convex front glass lens, 15x / Ø 16,3mm, batteries included  
**Ref. S09015**

biconvex glass lens with plano-convex front glass lens, 12x / Ø 16,3mm, batteries included  
**Ref. S09012**

aplanatic glass lens, 10x / Ø 22,8mm, batteries included  
**Ref. S09010**

aplanatic glass lens, 8x / Ø 30mm, batteries included  
**Ref. S09008**

aplanatic glass lens, 6x / Ø 30mm, batteries included  
**Ref. S09006**

aspheric glass lens, 4x / Ø 55mm, batteries included  
**Ref. S09004**

**Parts and case**

TECH-LINE alkaline batteries size AAA, pack of 3  
**Ref. S15600**



soft case for S09015, S09012, S09010, S09008, S09006  
**Ref. S11960**

soft case for S09004  
**Ref. S11961**

**IDEAL**

Transparent mount, handle in grey colour, biconvex lightweight lens



4x / Ø 50mm, pack of 3  
**Ref. S07105**

3x / Ø 60mm, pack of 3  
**Ref. S07104**

2,5x / Ø 80mm, pack of 3  
**Ref. S07103**

2x / Ø 100mm, pack of 3  
**Ref. S07102**

2x / □ 100x50mm, pack of 3  
**Ref. S07101**

**Set**


**Display IDEAL**  
2x each Ø 50 mm and Ø 60mm, 3x each Ø 80mm, Ø 100mm and □ 100x50mm  
**Ref. S07100**



## FOLDING MAGNIFIERS

### Metal

Stainless steel,  
black plastic mount,  
achromatic glass lens

Stainless steel,  
black plastic mount,  
aplanatic glass lens

Nickel-plated brass,  
black plastic mount,  
aplanatic glass lens

Stainless steel,  
black plastic mount,  
biconvex glass lens

### Plastic

Black plastic,  
aplanatic glass lens

Black plastic,  
the 2 plano-convex  
glass lenses can be  
used separately or as  
an aplanatic lens with  
added total power



8x / Ø 22,8mm  
**Ref. S56528**

6x / Ø 22,8mm  
**Ref. S56526**



20x / Ø 16,3mm  
**Ref. S55514**

15x / Ø 16,3mm  
**Ref. S55513**

15x / Ø 22,8mm  
**Ref. S55525**

12x / Ø 16,3mm  
**Ref. S55512**

12x / Ø 22,8mm  
**Ref. S55522**

10x / Ø 16,3mm  
**Ref. S55511**

10x / Ø 22,8mm  
**Ref. S55521**

8x / Ø 16,3mm  
**Ref. S55518**

8x / Ø 22,8mm  
**Ref. S55528**

6x / Ø 16,3mm  
**Ref. S55516**

6x / Ø 22,8mm  
**Ref. S55526**



15x / Ø 16,3mm,  
10x / Ø 16,3mm  
**Ref. S55816**

10x / Ø 22,8mm,  
6x / Ø 22,8mm  
**Ref. S55823**



6x / Ø 30mm,  
4x / Ø 30mm,  
total power 10x  
**Ref. S54600**

3x / Ø 30mm,  
3x / Ø 30mm,  
3x / Ø 30mm,  
total power 9x  
**Ref. S53300**

7x / Ø 30mm  
**Ref. S53700**

4x / Ø 30mm  
**Ref. S53400**

3x / Ø 30mm  
**Ref. S53100**



12x / Ø 22,8mm  
**Ref. S55012**

10x / Ø 22,8mm  
**Ref. S55010**

8x / Ø 22,8mm  
**Ref. S55080**

6x / Ø 22,8mm  
**Ref. S55060**



10x / Ø 16,3mm,  
10x / Ø 16,3mm  
**Ref. S55214**

8x / Ø 16,3mm,  
7x / Ø 16,3mm  
**Ref. S55213**

8x / Ø 22,8mm,  
7x / Ø 22,8mm  
**Ref. S55223**

7x / Ø 16,3mm,  
5x / Ø 16,3mm  
**Ref. S55212**

7x / Ø 22,8mm,  
5x / Ø 22,8mm  
**Ref. S55222**

6x / Ø 16,3mm,  
4x / Ø 16,3mm  
**Ref. S55211**

6x / Ø 22,8mm,  
4x / Ø 22,8mm  
**Ref. S55221**

5x / Ø 16,3mm,  
3x / Ø 16,3mm  
**Ref. S55218**

5x / Ø 22,8mm,  
3x / Ø 22,8mm  
**Ref. S55228**

3x / Ø 22,8mm,  
3x / Ø 22,8mm  
**Ref. S55226**



## LINEN TESTERS

### Cases

Leather,  
black colour

### Brass

Dull chromed

### Cases

Leather,  
black colour

### Aluminium

Black colour,  
case included

### Steel

Elastic spring for easy  
opening, measuring  
mm scale at the edge,  
biconvex glass lens

### Plastic

Measuring mm/in scale  
at the edge, biconvex  
lightweight lens



for all stainless steel  
and plastic folding  
magnifiers with a lens  
diameter of 22,8mm  
**Ref. S55520**

for all stainless steel  
and plastic folding  
magnifiers with a lens  
diameter of 16,3mm  
**Ref. S55510**



biconvex glass lens,  
cut-out 10x10mm,  
height 23mm,  
12x / Ø 12,5mm  
**Ref. S35100**

biconvex glass lens,  
cut-out 15x15mm,  
height 27mm,  
10x / Ø 14,5mm  
**Ref. S35200**

aplanatic glass lens,  
round cut-out Ø 20mm,  
10mm scale grad. 0,1  
on glass plate,  
height 35mm,  
8x / Ø 16,3mm  
**Ref. S37300**

biconvex glass lens,  
cut-out 20x20mm,  
height 33mm,  
8x / Ø 17,5mm  
**Ref. S35300**

biconvex glass lens,  
cut-out 25x25mm,  
height 42mm,  
6x / Ø 22,5mm  
**Ref. S35400**

biconvex glass lens,  
cut-out 30x30mm,  
height 53mm,  
5x / Ø 31,5mm  
**Ref. S35500**



for S35100  
**Ref. S35101**

for S35200  
**Ref. S35201**

for S37300, S35300  
**Ref. S35301**

for S35400  
**Ref. S35401**

for S35500  
**Ref. S35501**



aplanatic glass lens,  
cut-out 13x13mm,  
measuring mm/in scale  
at the edge,  
10x / Ø 13mm  
**Ref. S07146**

biconvex glass lens,  
cut-out 31x31mm,  
measuring mm/in  
scale on glass plate,  
6x / Ø 28mm  
**Ref. S07141**



chromed,  
cut-out 10x10mm,  
12x / Ø 12mm,  
pack of 3  
**Ref. S38100**

chromed,  
cut-out 15x15mm,  
10x / Ø 14mm,  
pack of 3  
**Ref. S38200**

chromed,  
cut-out 15x15mm,  
8x / Ø 17mm,  
pack of 3  
**Ref. S38300**

chromed,  
cut-out 20x20mm,  
8x / Ø 17mm,  
pack of 3  
**Ref. S38400**

brass-plated,  
cut-out 20x20mm,  
8x / Ø 17mm,  
pack of 3  
**Ref. S38500**



black colour,  
cut-out 20x25mm,  
8x / Ø 20mm,  
pack of 3  
**Ref. S39010**

transparent colour,  
cut-out 25x25mm,  
7x / Ø 25mm,  
pack of 3  
**Ref. S39000**

black colour,  
cut-out 20x20mm,  
6x / Ø 20mm,  
pack of 3  
**Ref. S50010**

black colour,  
cut-out 30x30mm,  
5x / Ø 25mm,  
pack of 3  
**Ref. S39020**

black colour,  
cut-out 25x25mm,  
5x / Ø 30mm,  
pack of 3  
**Ref. S05020**

black colour,  
cut-out 35x35mm,  
3x / Ø 45mm with  
6x bifocal lens,  
pack of 3  
**Ref. S05030**



## EYE CLAMPED MAGNIFIERS

### Magnifiers for watchmakers

Black plastic mount with vent hole, aplanatic glass lens

Black plastic mount with vent hole

Black plastic mount, biconvex lightweight lens

### Magnifiers for geologists

Black aluminium mount with vent hole

### Magnifiers for engravers

Black plastic mount with vent hole, biconvex glass lens



10x / Ø 22,8mm  
**Ref. S20310**

6x / Ø 22,8mm  
**Ref. S20360**



biconvex glass lens with plano-convex front glass lens, 15x / Ø 16,3mm  
**Ref. S20115**

biconvex glass lens with plano-convex front glass lens, 12x / Ø 16,3mm  
**Ref. S20112**

biconvex glass lens, 10x / Ø 25mm  
**Ref. S20010**

biconvex glass lens, 10x / Ø 30mm  
**Ref. S20210**

biconvex glass lens, 7x / Ø 25mm  
**Ref. S20070**

biconvex glass lens, 7x / Ø 30mm  
**Ref. S20270**

biconvex glass lens, 5x / Ø 25mm  
**Ref. S20050**

biconvex glass lens, 5x / Ø 30mm  
**Ref. S20250**

biconvex glass lens, 4x / Ø 25mm  
**Ref. S20040**

biconvex glass lens, 4x / Ø 30mm  
**Ref. S20240**

biconvex glass lens, 3x / Ø 25mm  
**Ref. S20030**

biconvex glass lens, 2,5x / Ø 25mm  
**Ref. S20025**



9x / Ø 28mm, pack of 3  
**Ref. S07172**

7x / Ø 28mm, pack of 3  
**Ref. S07171**

5x / Ø 28mm, pack of 3  
**Ref. S07170**



biconvex glass lens with plano-convex front glass lens, 20x / Ø 16mm  
**Ref. S20620**

biconvex glass lens with plano-convex front glass lens, 15x / Ø 16mm  
**Ref. S20615**

biconvex glass lens with plano-convex front glass lens, 10x / Ø 16mm  
**Ref. S20610**

biconvex glass lens, 4x / Ø 25mm  
**Ref. S20440**

biconvex glass lens, 3x / Ø 25mm  
**Ref. S20430**

biconvex glass lens, 2,5x / Ø 25mm  
**Ref. S20425**



5x / Ø 40mm  
**Ref. S20550**

4x / Ø 40mm  
**Ref. S20540**



## STAND AND MEASURING MAGNIFIERS

### Working stand magnifiers

Flexible metal tube with 300mm length, heavy table base in black colour Ø 130mm

Flexible metal tube with 300mm length, table clamp



metal mount, aplanatic glass lens, 4x / Ø 65mm  
**Ref. S31265**

metal mount, aplanatic glass lens, 3,5x / Ø 75mm  
**Ref. S31275**

metal mount, biconvex glass lens, 3x / Ø 75mm  
**Ref. S31075**

black plastic mount, aspheric lightweight lens, 3x / □ 100x75mm  
**Ref. S31400**

metal mount, biconvex glass lens, 2,5x / Ø 90mm  
**Ref. S31090**

metal mount, biconvex glass lens, 2,5x / Ø 100mm  
**Ref. S31010**

metal mount, biconvex glass lens, 2x / Ø 120mm  
**Ref. S31012**

metal mount, aplanatic glass lens, 4x / Ø 65mm  
**Ref. S31266**

metal mount, aplanatic glass lens, 3,5x / Ø 75mm  
**Ref. S31276**

metal mount, biconvex glass lens, 3x / Ø 75mm  
**Ref. S31076**

black plastic mount, aspheric lightweight lens, 3x / □ 100x75mm  
**Ref. S31410**

metal mount, biconvex glass lens, 2,5x / Ø 90mm  
**Ref. S31091**

metal mount, biconvex glass lens, 2,5x / Ø 100mm  
**Ref. S31011**

metal mount, biconvex glass lens, 2x / Ø 120mm  
**Ref. S31013**

### Stand magnifiers



round black mount, transparent stand, Ø 45mm, height 50mm, aplanatic lightweight lens, 10x / Ø 30mm  
**Ref. S32300**

black mount, open black stand, focusable, height 45mm, aplanatic glass lens, 8x / Ø 23mm  
**Ref. S32900**

round black mount, transparent stand, Ø 70mm, height 60mm, aspheric lightweight lens, 4x / Ø 60mm  
**Ref. S32200**

### Measuring magnifiers



round black mount, transparent stand, Ø 45mm, height 50mm, 15mm scale grad. 0,1, aplanatic lightweight lens, 10x / Ø 30mm  
**Ref. S33300**

black mount, open black stand, focusable, height 45mm, 15mm scale grad. 0,1, aplanatic glass lens, 8x / Ø 23mm  
**Ref. S33000**

round black mount, transparent stand, 30mm scale grad. 0,1 on glass plate, aplanatic glass lens, 8x / Ø 30mm  
**Ref. S07150**

round black mount, transparent stand, focusable, 20mm scale grad. 0,1, apochromatic lens system, 7x / Ø 22,8mm  
**Ref. S07017**

### Part and accessories

replacement measuring scale for S07150  
**Ref. S07151\***



LED illumination unit for S07017, batteries included  
**Ref. S09000**

alkaline batteries size AAA for S09000, pack of 3  
**Ref. S15600**

soft case for S09000  
**Ref. S11960**

### Steel measuring magnifiers

Stainless steel mm scale grad. 0,1, focusable, aplanatic glass lens



10x with 10mm scale, plastic container for storage included  
**Ref. S33402**

8x with 10mm scale, plastic container for storage included  
**Ref. S33401**

6x with 20mm scale, plastic container for storage included  
**Ref. S33400**

\* : other measuring scales on request



## TECHNICAL HANDLE MAGNIFIERS

## TECHNICAL SET

## POCKET MICROSCOPES

### Technical handle magnifiers

Metal mount and handle, aplanatic glass lens

Plastic mount and handle, aplanatic glass lens

Plastic mount and handle, biconvex glass lens

### Technical set

### Pocket microscopes

Length 150mm, adjustable magnification power, fine-focusable, achromatic lens system

Silver colour, case included



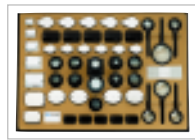
20x / Ø 18mm  
**Ref. S60112**



15x / Ø 22,8mm  
**Ref. S60025**



5x / Ø 40mm  
**Ref. S60250**



### Technical set

S55514, S55513, S55525, S55512, S55522, S55511, S55521, S55518, S55528, S55516, S55526, S55816, S55823, S54600, S53700, S53400, S53100, S55214, S55213, S55223, S55212, S55222, S55211, S55221, S55218, S55228, S55226, S35100, S35200, S35300, S35400, S35500, S20115, S20112, S20010, S20070, S20050, S20250, S20040, S20240, S20440, S33300, S33000, S60025, S60021, S60038, S60036, S60045, S60054

**Ref. S30000**



40x / 50x / 60x, plastic case with manual included  
**Ref. S33500**

measuring mm scale, 40x / 50x / 60x, plastic case with manual included  
**Ref. S33600**



illumination unit with stand for 2x size AAA batteries, for S33500, S33600  
**Ref. S33550**



100x  
**Ref. S07242**

75x  
**Ref. S07241**

50x  
**Ref. S07240**

10x / Ø 18mm  
**Ref. S60111**

10x / Ø 22,8mm  
**Ref. S60021**

3x / Ø 40mm  
**Ref. S60230**

10x / Ø 28mm  
**Ref. S60121**

8x / Ø 30mm  
**Ref. S60038**

8x / Ø 28mm  
**Ref. S60128**

6x / Ø 30mm  
**Ref. S60036**

5x / Ø 40mm  
**Ref. S60045**

4x / Ø 50mm  
**Ref. S60054**



## BINOCULAR HEAD MAGNIFIERS

Black plastic housing, illumination for 2x size AA batteries, removable foot with specimen holder, glass optics with zoom



60x up to 100x  
**Ref. S07245**

### Parts

alkaline batteries size AAA for S33550, pack of 3  
**Ref. S15600**

alkaline batteries size AA for S07245, pack of 3  
**Ref. S15500**

### Binocular head magnifiers

White metal housing, flip-up holder of the exchangeable optical element, steel strap, glass lenses



3,5x for 100mm working distance  
**Ref. S25635**

3x for 130mm working distance  
**Ref. S25630**

2,75x for 150mm working distance  
**Ref. S25625**

2,5x for 170mm working distance  
**Ref. S25620**

2x for 220mm working distance  
**Ref. S25615**

1,85x for 250mm working distance  
**Ref. S25610**

Exchangeable optical element, glass lenses



3,5x for 100mm working distance  
**Ref. S25735**

3x for 130mm working distance  
**Ref. S25730**

2,75x for 150mm working distance  
**Ref. S25725**

2,5x for 170mm working distance  
**Ref. S25720**

2x for 220mm working distance  
**Ref. S25715**

1,85x for 250mm working distance  
**Ref. S25710**

### Part

Black plastic housing, Velcro fastener, additional binocular flip-up lens, lightweight lenses



2x / 3x  
**Ref. S07220**

illumination on both sides for 4x size AAA batteries, extra swivel lens, 2x / 3x / 4x / 5x  
**Ref. S07221**

alkaline batteries size AAA for S07221, pack of 3  
**Ref. S15600**



## SPECIAL MAGNIFIERS

### VISOLETTE

Bright field magnifier made from glass, magnification 1,8x

### Cases

Leather with zipper, black colour

### Acrylic bright field magnifiers

Lightweight, concave bottom side, magnification 1,8x, cloth pouch included

### Reading bars

Lightweight, vertical magnification, integrated handle

### Cases

Velour leather

### Sets



white plastic mount, Ø 90mm

**Ref. S93062**

white plastic mount, Ø 65mm

**Ref. S93066**

white plastic mount, Ø 40mm

**Ref. S93064**



inclined segment, 25x65mm

**Ref. S93065**



Ø 50mm

**Ref. S93067**

Ø 65mm

**Ref. S93068**

Ø 80mm

**Ref. S93069**

Ø 95mm

**Ref. S93070**



2x, total 165x20mm, effective 140x20mm, **Ref. S43214**

2x, total 250x25mm, integrated lens 8x, integrated cm/in ruler, pack of 3 **Ref. S07137**

1,5x, total 220x35mm, effective 200x35mm, red guiding line **Ref. S43220**

1,5x, total 250x32mm, effective 200x25mm, integrated cm ruler **Ref. S43320**

1,5x, total 350x35mm, effective 330x35mm, red guiding line **Ref. S43233**

for S43214

**Ref. S43215**

for S43220

**Ref. S43221**

for S43320

**Ref. S43321**

for S43233

**Ref. S43234**



### Box special magnifiers

S93064, S93066, S93065, S93060, S93067, S93068, S93069, S93070, S43214, S43220

**Ref. S93075**



### Trial box bright field magnifiers

S93065, 2x S93067, S93068, S93069, S93070

**Ref. S93081**



### Box APLAMED, APLANAT, CLASSIC, VISOLETTE, magnifying rulers

S74650, S74900, S61650, S51750, S93064, S43214, S43215, S43220, S43221

**Ref. S21300**



### Needlework

Transparent mount, neck cord included, biconvex lightweight lens



2x / Ø 100mm with bifocal lens, pack of 3

**Ref. S06010**

2x / Ø 110mm with bifocal lens

**Ref. S79400**

2x / □ 140x105mm, pack of 3

**Ref. S07131**

### Cup magnifiers

Magnification of insects, botanical or water samples



inside Ø 42mm, measuring mm scale, aplanatic lens system, 5x / Ø 42mm, pack of 3

**Ref. S34020**

inside Ø 60mm, 2,5x / Ø 30mm and bottom lens mirrored to the side, 2,5x / Ø 30mm, pack of 3

**Ref. S34000**

inside Ø 45mm, measuring mm scale, transport compression, 2 x / Ø 45mm, with additional lens 4 x / Ø 30mm, pack of 3

**Ref. S34010**

### Fresnel



white colour, 3,5x / □ 80x30mm, pack of 10

**Ref. S04025**

transparent colour, 3x / □ 80x45mm, pack of 10

**Ref. S04010**

transparent colour, 2x / □ 160x60mm, pack of 5

**Ref. S04030**

black colour, 2x / □ 120x80mm, pack of 5

**Ref. S04040**

black colour, 2x / □ 220x160mm, pack of 3

**Ref. S04050**

### TV-screens

Stand with adjustable distance and height



for screen diagonals up to 450mm, magnified diagonal image 600mm, 520x420mm

**Ref. S93781**

for screen diagonals up to 550mm, magnified diagonal image 700mm, 620x480mm

**Ref. S93782**

for screen diagonals up to 700mm, magnified diagonal image 800mm, 750x550mm

**Ref. S93783**

### 90° spectacle

Bedridden persons can read or watch TV easily



90° prisms

**Ref. S07223**

### Monoculars

Focusable from infinity to near distance, complete coating, soft case and neck cord included



3x20, minimum focal distance 250mm

**Ref. S07230**

4x12, minimum focal distance 190mm

**Ref. S07231**

6x16, minimum focal distance 240mm

**Ref. S07232**

8x21, minimum focal distance 300mm

**Ref. S07233**



## READING STANDS

### READING STANDS Part



natural wood,  
inclination adjustable  
in multiple steps,  
surface 400x500mm  
**Ref. S93720**

tube for S93721,  
15W / 4.000K  
**Ref. S93722**



natural wood,  
inclination adjustable  
in multiple steps,  
surface 400x500mm,  
fixed lamp in white  
colour 15W / 4.000K,  
220V EURO-PLUG  
**Ref. S93721**



white plastic,  
fixed inclination 23°,  
surface 280x320mm,  
pack of 2  
**Ref. S93723**