

Illuminated magnifiers

Mains operation or rechargeable battery operation or normal battery operation? Stand magnifier or mobile hand-held magnifier? LED lighting, krypton lighting or halogen lighting? Manual switch or automatic sensor switch? Open lens mount or closed lens mount? Different designs? We have it all!

ÖKOLUX / ÖKOLUX SilverLine

1.02 – 1.03

KRYPTOLUX / KRYPTOLUX AKKU

1.04 – 1.05

MODULAR / MODULAR AS /

MODULAR AKKU

1.06 – 1.09

TWIN LUX-H

1.09

ÖKOLUX MOBIL /

ÖKOLUX MOBIL SilverLine

1.10 – 1.11

MODULAR MOBIL /

MODULAR MOBIL SilverLine

1.12 – 1.13



ÖKOLUX / ÖKOLUX SilverLine

ÖKOLUX

Battery operated stand magnifier with LED lighting, closed lens mount

Aspheric lightweight lens

Aspheric lightweight lens with anti-reflective hard coating

The ÖKOLUX series from Schweizer was the world's first LED illuminated magnifier series.

The use of light emitting diodes LED means that it virtually is never necessary to replace a bulb and that the batteries only have to be changed extremely seldom. This makes the ÖKOLUX and the ÖKOLUX SilverLine series not only an extremely environment-friendly and economical product series which can be used independent of any external power supply. It makes also a trouble free product even for people who cannot change a tiny bulb and have to exert themselves to change small batteries.

With ÖKOLUX and ÖKOLUX SilverLine stand magnifiers the illumination of the object is bright, even and has a high contrast. The light temperature is about 6.000K.

There are available 5 different lens powers between 8D and 28D in a closed lens mount. Optional all aspheric lightweight lenses of the ÖKOLUX and the ÖKOLUX SilverLine series are also available with an anti-reflective hard coating.

The 8D power is tilted towards the user by an inclined bottom plate of the lens mount. This bottom plate can be turned easily for right-hand or for left-hand use.

The ÖKOLUX series is also available in the attractive SilverLine design which combines the performance of this everyday utility with a trendy style.

For display and testing purposes there are available our well-tried display boxes.



28D / 8x / Ø 35mm
Ref. S14100 (2)

28D / 8x / Ø 35mm
Ref. S14108



20D / 6x / Ø 55mm
Ref. S14200 (2)

20D / 6x / Ø 55mm
Ref. S14208



16D / 5x / Ø 60mm
Ref. S14300 (2)

16D / 5x / Ø 60mm
Ref. S14308



12D / 4x / Ø 70mm
Ref. S14400 (2)

12D / 4x / Ø 70mm
Ref. S14408



8D / 3x /
□ 100x75mm
Ref. S14500 (2)

8D / 3x /
□ 100x75mm
Ref. S14508

(2): internal remark



ÖKOLUX SilverLine

Battery operated stand magnifier with LED lighting, closed lens mount

Aspheric lightweight lens

Aspheric lightweight lens with anti-reflective hard coating

Sets

ÖKOLUX

ÖKOLUX SilverLine

Part



28D / 8x / Ø 35mm,
batteries included
Ref. S14105

28D / 8x / Ø 35mm,
batteries included
Ref. S14109



20D / 6x / Ø 55mm,
batteries included
Ref. S14205

20D / 6x / Ø 55mm,
batteries included
Ref. S14209



16D / 5x / Ø 60mm,
batteries included
Ref. S14305

16D / 5x / Ø 60mm,
batteries included
Ref. S14309



12D / 4x / Ø 70mm,
batteries included
Ref. S14405

12D / 4x / Ø 70mm,
batteries included
Ref. S14409



8D / 3x /
□ 100x75mm,
batteries included
Ref. S14505

8D / 3x /
□ 100x75mm,
batteries included
Ref. S14509



Box ÖKOLUX
S14200, S14300,
S14400, S14500
Ref. S22030 (2)

Box ÖKOLUX
with anti-reflective
hard coating
S14208, S14308,
S14408, S14508
Ref. S22042



Box ÖKOLUX SilverLine
S14205, S14305,
S14405, S14505,
batteries included
Ref. S22034

Box ÖKOLUX SilverLine
with anti-reflective
hard coating
S14209, S14309,
S14409, S14509,
batteries included
Ref. S22045



ÖKOLUX alkaline
batteries size AA,
pack of 3
Ref. S15500

(2): internal remark



KRYPTOLUX / KRYPTOLUX AKKU

KRYPTOLUX

220V EURO-PLUG
Mains operated stand
magnifier with krypton
lighting, closed lens
mount

Aspheric lightweight
lens

Aspheric lightweight
lens with anti-reflective
hard coating

The KRYPTOSTAR bulb with a krypton gas filling and a life time of about 400 hours was exclusively developed for Schweizer to be used in the world's first krypton illuminated magnifier series KRYPTOLUX and KRYPTOLUX AKKU.

With KRYPTOLUX and KRYPTOLUX AKKU stand magnifiers a homogenous lighting of the object with a unique brightness and subsequently a high contrast is ensured. The light temperature is about 3.000K.

KRYPTOLUX magnifiers have a transformer cable fixed to the handle for mains operation only. KRYPTOLUX AKKU magnifiers have a separate transformer charging cable and a rechargeable battery in the handle with a maximum usage time of about 90 minutes. The latest NiMH technology and an integrated electronic charge control ensure a trouble-free maximum life time of about 1.000 complete charging cycles. The duration of a complete recharging is only about 2 hours even with the light being switched on.

There are available 5 different lens powers between 8D and 28D in a closed lens mount. Optional all aspheric lightweight lenses of the KRYPTOLUX series are also available with an anti-reflective hard coating.

The 8D power is tilted towards the user by an inclined bottom plate of the lens mount. This bottom plate can be turned easily for right-hand or for left-hand use.

For display and testing purposes there are available our well-tries display boxes.



28D / 8x / Ø 35mm
Ref. S14160

28D / 8x / Ø 35mm
Ref. S14168



20D / 6x / Ø 55mm
Ref. S14260

20D / 6x / Ø 55mm
Ref. S14268



16D / 5x / Ø 60mm
Ref. S14360

16D / 5x / Ø 60mm
Ref. S14368



12D / 4x / Ø 70mm
Ref. S14460

12D / 4x / Ø 70mm
Ref. S14468



8D / 3x /
□ 100x75mm
Ref. S14560

8D / 3x /
□ 100x75mm
Ref. S14568

KRYPTOLUX AKKU

220V EURO-PLUG
Rechargeable battery
operated stand
magnifier with krypton
lighting, closed lens
mount

Aspheric lightweight
lens

Aspheric lightweight
lens with anti-reflective
hard coating

Sets

KRYPTOLUX

KRYPTOLUX AKKU

Parts



28D / 8x / Ø 35mm
Ref. S14150 (2)(3)(4)

28D / 8x / Ø 35mm
Ref. S14158



20D / 6x / Ø 55mm
Ref. S14250 (2)(3)(4)

20D / 6x / Ø 55mm
Ref. S14258



16D / 5x / Ø 60mm
Ref. S14350 (2)(3)(4)

16D / 5x / Ø 60mm
Ref. S14358



12D / 4x / Ø 70mm
Ref. S14450 (2)(3)(4)

12D / 4x / Ø 70mm
Ref. S14458



8D / 3x /
□ 100x75mm
Ref. S14550 (2)(3)(4)

8D / 3x /
□ 100x75mm
Ref. S14558



Box KRYPTOLUX
S14260, S14460,
S14560
Ref. S22060



Box KRYPTOLUX AKKU
S14250, S14450,
S14550
Ref. S22078 (2) (3)



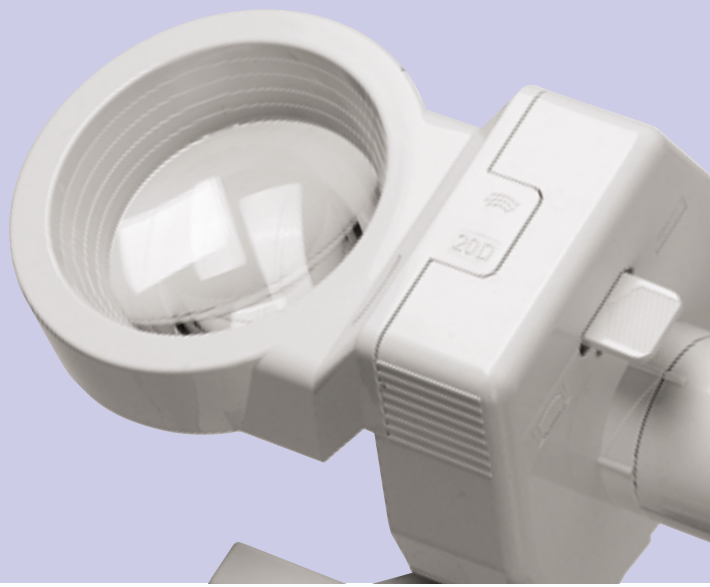
transformer cable
Ref. S14751 (3) (4)



KRYPTOSTAR
screw bulb
Ref. S19810

Box KRYPTOLUX AKKU
with anti-reflective
hard coating
S14258, S14458,
S14558
Ref. S22070

(2): internal remark
(3): also available for
110V US-PLUG
(4): also available for
220V UK-PLUG



MODULAR / MODULAR AS / MODULAR AKKU

MODULAR

220V EURO-PLUG
Mains operated stand
magnifier with halogen
lighting, open lens
mount

Aspheric lightweight
lens

Aspheric lightweight
lens with anti-reflective
hard coating

Aspheric lightweight lenses in 7 different powers between 8D and 39D can be interchanged by a click in all 3 different MODULAR series. Furthermore the lenses can be tilted towards the user for right-hand or for left-hand use. Due to the open lens mount even writing under the lens is possible.

MODULAR magnifiers have a transformer cable fixed to the handle for mains operation only. They are illuminated by the halogen plug bulb HALOSTAR with a life time of about 2.000 hours and a light temperature of about 3.000K.

Also the MODULAR AS magnifiers are designed for mains operation. However, an integrated automatic sensor is switching the light on as soon as the magnifier is moved. There is no more manual switch and after a few minutes without movement the light is switched off automatically. MODULAR AS magnifiers are illuminated by KRYPTOSTAR bulbs. For further information about this innovative lighting please refer to page 1.04.

MODULAR AKKU magnifiers have a separate transformer charging cable and a rechargeable battery in the handle. They are illuminated by KRYPTOSTAR bulbs. For further information about this innovative lighting as well as about the technology of the rechargeable battery please refer to page 1.04.

For display and testing purposes there are available our well-trying display boxes.



39D / 10x / Ø 35mm
Ref. S18900

39D / 10x / Ø 35mm
Ref. S18908



28D / 8x / Ø 35mm
Ref. S19000

28D / 8x / Ø 35mm
Ref. S19008



20D / 6x / Ø 55mm
Ref. S19100

20D / 6x / Ø 55mm
Ref. S19108



16D / 5x / Ø 60mm
Ref. S19200

16D / 5x / Ø 60mm
Ref. S19208



12D / 4x / Ø 70mm
Ref. S19300

12D / 4x / Ø 70mm
Ref. S19308



8D / 3x / Ø 85mm
Ref. S19400

8D / 3x / Ø 85mm
Ref. S19408



8D / 3x /
□ 100x75mm
Ref. S19600

8D / 3x /
□ 100x75mm
Ref. S19608



MODULAR AS

220V EURO-PLUG
Mains operated stand
magnifier with krypton
lighting, automatic
sensor switch, open
lens mount

Aspheric lightweight
lens

Aspheric lightweight
lens with anti-reflective
hard coating

MODULAR AKKU

220V EURO-PLUG
Rechargeable battery
operated stand
magnifier with krypton
lighting, open lens
mount

Aspheric lightweight
lens

Aspheric lightweight
lens with anti-reflective
hard coating



39D / 10x / Ø 35mm
Ref. S18940

39D / 10x / Ø 35mm
Ref. S18948



39D / 10x / Ø 35mm
Ref. S18970 (3)

39D / 10x / Ø 35mm
Ref. S18978



28D / 8x / Ø 35mm
Ref. S19040

28D / 8x / Ø 35mm
Ref. S19048



28D / 8x / Ø 35mm
Ref. S19070 (3)

28D / 8x / Ø 35mm
Ref. S19078



20D / 6x / Ø 55mm
Ref. S19140

20D / 6x / Ø 55mm
Ref. S19148



20D / 6x / Ø 55mm
Ref. S19170 (3)

20D / 6x / Ø 55mm
Ref. S19178



16D / 5x / Ø 60mm
Ref. S19240

16D / 5x / Ø 60mm
Ref. S19248



16D / 5x / Ø 60mm
Ref. S19270 (3)

16D / 5x / Ø 60mm
Ref. S19278



12D / 4x / Ø 70mm
Ref. S19340

12D / 4x / Ø 70mm
Ref. S19348



12D / 4x / Ø 70mm
Ref. S19370 (3)

12D / 4x / Ø 70mm
Ref. S19378



8D / 3x / Ø 85mm
Ref. S19440

8D / 3x / Ø 85mm
Ref. S19448



8D / 3x / Ø 85mm
Ref. S19470 (3)

8D / 3x / Ø 85mm
Ref. S19478



8D / 3x /
□ 100x75mm
Ref. S19640

8D / 3x /
□ 100x75mm
Ref. S19648



8D / 3x /
□ 100x75mm
Ref. S19670 (3)

8D / 3x /
□ 100x75mm
Ref. S19678

(3): also available for
110V US-PLUG



MODULAR / MODULAR AS / MODULAR AKKU

Heads

MODULAR /
MODULAR AS /
MODULAR AKKU

Aspheric lightweight
lens

Aspheric lightweight
lens with anti-reflective
hard coating

Sets

MODULAR

MODULAR AS

MODULAR AKKU



39D / 10x / Ø 35mm
Ref. S18910

39D / 10x / Ø 35mm
Ref. S18918



28D / 8x / Ø 35mm
Ref. S19010

28D / 8x / Ø 35mm
Ref. S19018



20D / 6x / Ø 55mm
Ref. S19110

20D / 6x / Ø 55mm
Ref. S19118



16D / 5x / Ø 60mm
Ref. S19210

16D / 5x / Ø 60mm
Ref. S19218



12D / 4x / Ø 70mm
Ref. S19310

12D / 4x / Ø 70mm
Ref. S19318



8D / 3x / Ø 85mm
Ref. S19410

8D / 3x / Ø 85mm
Ref. S19418



8D / 3x /
□ 100x75mm
Ref. S19610

8D / 3x /
□ 100x75mm
Ref. S19618



**Box
MODULAR**
S19600, S19110,
S19310, S18500
Ref. S22000



**Box
MODULAR AS**
S19640, S19110,
S19310, S18500
Ref. S22400



**Box
MODULAR AKKU**
S19670, S19110,
S19310, S18500
Ref. S22700 (3)

**Box
MODULAR**
with anti-reflective
hard coating
S19608, S19118,
S19318, S18500
Ref. S22008

**Box
MODULAR AS**
with anti-reflective
hard coating
S19648, S19118,
S19318, S18500
Ref. S22408

**Box
MODULAR AKKU**
with anti-reflective
hard coating
S19678, S19118,
S19318, S18500
Ref. S22708

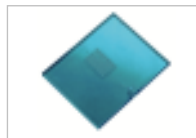
(3): also available for
110V US-PLUG

TWIN LUX-H
Parts and accessories
MODULAR
MODULAR AS
MODULAR AKKU
TWIN LUX-H
 220V EURO-PLUG
 Mains operated stand magnifier with halogen lighting, 2 aspheric lightweight lenses

 tilting part without filters
Ref. S18300

 additional aspheric lightweight lens, 6D / 2,5x / □ 100x50mm, total power 4,5x in combination with S19600, S19608, S19640, S19648, S19670, S19678, S19610, S19618
Ref. S18400

 additional aspheric lightweight lens with anti-reflective hard-coating, 6D / 2,5x / □ 100x50mm, total power 4,5x in combination with S19600, S19608, S19640, S19648, S19670, S19678, S19610, S19618
Ref. S18408

 guiding line and reading bar, vertical magnification of reading bar 1,5x
Ref. S18500

 filter set consisting of 1 transparent and 2 coloured filters
Ref. S18700

 battery handle, incandescent bulb included
Ref. S19700

 incandescent bulb for S19700, pack of 10
Ref. S15900

 halogen bulb for S19700
Ref. S19800

 MODULAR alkaline batteries size C
Ref. S15810

 handle with fixed transformer cable, HALOSTAR plug bulb, tilting part, filter set
Ref. S18200

 handle with fixed transformer cable, without bulb
Ref. S18600

 HALOSTAR plug bulb
Ref. S19900

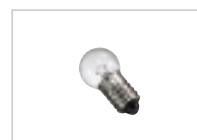
 handle with fixed transformer cable, KRYPTOSTAR screw bulb, tilting part, filter set
Ref. S18240

 handle with fixed transformer cable, KRYPTOSTAR screw bulb
Ref. S18640

 KRYPTOSTAR screw bulb
Ref. S19810

 handle with separate transformer cable, KRYPTOSTAR screw bulb, tilting part, filter set
Ref. S18270 (3)

 handle with separate transformer cable, KRYPTOSTAR screw bulb
Ref. S18660 (3)

 transformer cable
Ref. S14751 (3)

 KRYPTOSTAR screw bulb
Ref. S19810

 8D / 3x / □ 100x75mm and 6D / 2,5x / □ 100x50mm, total power 4,5x
Ref. S91500

 with anti-reflective hard coating, 8D / 3x / □ 100x75mm and 6D / 2,5x / □ 100x50mm, total power 4,5x
Ref. S91508

 HALOSTAR plug bulb
Ref. S19900

(3): also available for 110V US-PLUG



ÖKOLUX MOBIL / ÖKOLUX MOBIL SilverLine

ÖKOLUX MOBIL

Battery operated hand-held magnifier with LED lighting

Aspheric lightweight lens

Aspheric lightweight lens with anti-reflective hard coating

The illuminated magnifiers of the ÖKOLUX MOBIL and ÖKOLUX MOBIL SilverLine series from Schweizer fit in every pocket and are the ideal hand-held magnifiers on the move or at home.

The use of light emitting diodes LED means that it virtually is never necessary to replace a bulb and that the batteries only have to be changed extremely seldom. Further information about LED illuminated magnifiers from Schweizer can also be found on page 1.02 of this catalogue.

The batteries of the ÖKOLUX MOBIL and ÖKOLUX MOBIL SilverLine magnifiers are placed in the handle to save space. A sturdy folding hinge makes the change of the batteries a child's play. The battery compartment is opened easily by a second function of the on/off switch.

There are available 5 different lens powers between 9D and 39D. Optional all aspheric lightweight lenses of the OKOLUX MOBIL and ÖKOLUX MOBIL SilverLine series are also available with an anti-reflective hard coating.

The ÖKOLUX MOBIL series is also available in the attractive SilverLine design which combines the performance of this everyday utility with a trendy style.

For display and testing purposes there are not only available our well-tried display boxes but also wooden counter displays and a lens display.



39D / 10x / Ø 35mm
Ref. S13600 (2)

39D / 10x / Ø 35mm
Ref. S13608



28D / 8x / Ø 35mm
Ref. S13700 (2)

28D / 8x / Ø 35mm
Ref. S13708



20D / 6x / Ø 55mm
Ref. S13800 (2)

20D / 6x / Ø 55mm
Ref. S13808



12D / 4x / Ø 70mm
Ref. S13900 (2)

12D / 4x / Ø 70mm
Ref. S13908



9D / 3,25x /
□ 75x50mm
Ref. S13500 (2)

9D / 3,25x /
□ 75x50mm
Ref. S13508

(2): internal remark



ÖKOLUX MOBIL SilverLine

Battery operated
hand-held magnifier
with LED lighting

Aspheric lightweight
lens

Aspheric lightweight
lens with anti-reflective
hard coating

Sets

ÖKOLUX MOBIL

ÖKOLUX MOBIL
SilverLine

Part and cases



39D / 10x / Ø 35mm,
batteries included
Ref. S13605

39D / 10x / Ø 35mm,
batteries included
Ref. S13609



28D / 8x / Ø 35mm,
batteries included
Ref. S13705

28D / 8x / Ø 35mm,
batteries included
Ref. S13709



20D / 6x / Ø 55mm,
batteries included
Ref. S13805

20D / 6x / Ø 55mm,
batteries included
Ref. S13809



12D / 4x / Ø 70mm,
batteries included
Ref. S13905

12D / 4x / Ø 70mm,
batteries included
Ref. S13909



9D / 3,25x /
□ 75x50mm,
batteries included
Ref. S13505

9D / 3,25x /
□ 75x50mm,
batteries included
Ref. S13509



**Box
ÖKOLUX MOBIL**
S13600, S13700,
2x S13800, S13900,
2x S13500
Ref. S22024 (2)

**Box
ÖKOLUX MOBIL**
with anti-reflective
hard coating
S13608, S13708,
2x S13808, S13908,
2x S13508
Ref. S22023



**Wooden display
ÖKOLUX MOBIL**
S13600, S13700,
2x S13800, S13900,
2x S13500
Ref. S22026

**Wooden display
ÖKOLUX MOBIL**
with anti-reflective
hard coating
S13608, S13708,
2x S13808, S13908,
2x S13508
Ref. S22025

(2): internal remark



**Box MOBIL LED
SilverLine**
S13705, S13805,
S13905, S12255,
S12455, S12555,
S12655, batteries
included
Ref. S22014



**Wooden display
ÖKOLUX MOBIL
SilverLine**
S13605, S13705,
2x S13805, S13905,
2x S13505, batteries
included
Ref. S22047

**Wooden display
ÖKOLUX MOBIL
SilverLine**
with anti-reflective
hard coating
S13609, S13709,
2x S13809, S13909,
2x S13509, batteries
included
Ref. S22048

**Lens display
ÖKOLUX MOBIL
SilverLine**
Ref. S50101



MOBIL alkaline
batteries size AAA,
pack of 3
Ref. S15600



soft case for
S13600, S13608,
S13605, S13609,
S13700, S13708,
S13705, S13709
Ref. S11960

soft case for
S13800, S13808,
S13805, S13809,
S13900, S13908,
S13905, S13909
Ref. S11961

soft case for
S13500, S13508,
S13505, S13509
Ref. S11962



MODULAR MOBIL / MODULAR MOBIL SilverLine

MODULAR MOBIL

Battery operated hand-held magnifier with LED lighting

Aspheric lightweight lens

Heads, aspheric lightweight lens

Aspheric lightweight lenses in 5 different powers between 9D and 39D can be interchanged by a click in the MODULAR MOBIL and MODULAR MOBIL SilverLine series of illuminated hand-held magnifiers. A patented automatic light focus function guarantees a perfect lighting with any of the available 5 magnifier heads (German patent 19711645). Furthermore those lens heads can be swivelled to the left or the right side to any convenient angle even for left-hand users.

The use of light emitting diodes LED means that it virtually is never necessary to replace a bulb and that the batteries only have to be changed extremely seldom. Further information about LED illuminated magnifiers from Schweizer can also be found on page 1.02 of this catalogue.

The MODULAR MOBIL series is also available in the attractive SilverLine design which combines the performance of this everyday utility with a trendy style.

Handy soft cases in black colour which can be fixed to a waist belt easily are available for all magnifiers of the MODULAR MOBIL and MODULAR MOBIL SilverLine series.

For display and testing purposes there are not only available our well-trying display boxes but also wooden counter displays.



39D / 10x / Ø 35mm
Ref. S12250 (2)

39D / 10x / Ø 35mm
Ref. S12210



28D / 8x / Ø 35mm
Ref. S12350 (2)

28D / 8x / Ø 35mm
Ref. S12310



20D / 6x / Ø 55mm
Ref. S12450 (2)

20D / 6x / Ø 55mm
Ref. S12410



12D / 4x / Ø 70mm
Ref. S12550 (2)

12D / 4x / Ø 70mm
Ref. S12510



9D / 3,25x /
□ 75x50mm
Ref. S12650 (2)

9D / 3,25x /
□ 75x50mm
Ref. S12610

(2): internal remark



**MODULAR MOBIL
SilverLine**

Battery operated
hand-held magnifier
with LED lighting

Aspheric lightweight
lens

Heads,
aspheric lightweight
lens

Sets

MODULAR MOBIL

MODULAR MOBIL
SilverLine

Parts and cases



39D / 10x / Ø 35mm,
batteries included
Ref. S12255

39D / 10x / Ø 35mm
Ref. S12215



28D / 8x / Ø 35mm,
batteries included
Ref. S12355

28D / 8x / Ø 35mm
Ref. S12315



20D / 6x / Ø 55mm,
batteries included
Ref. S12455

20D / 6x / Ø 55mm
Ref. S12415



12D / 4x / Ø 70mm,
batteries included
Ref. S12555

12D / 4x / Ø 70mm
Ref. S12515



9D / 3,25x /
□ 75x50mm,
batteries included
Ref. S12655

9D / 3,25x /
□ 75x50mm
Ref. S12615



**Box
MODULAR MOBIL**
S12250, S12350,
S12450, S12550,
S12650
Ref. S22015



**Box MOBIL LED
SilverLine**
S13705, S13805,
S13905, S12255,
S12455, S12555,
S12655, batteries
included
Ref. S22014



handle
Ref. S12950 (2)



**Wooden display
MODULAR MOBIL**
S12250, S12350,
S12450, S12550,
S12650
Ref. S50065



**Wooden display
MODULAR MOBIL
SilverLine**
S12255, S12355,
S12455, S12555,
S12655, batteries
included
Ref. S22017



SilverLine handle,
batteries included
Ref. S12955



MOBIL alkaline
batteries size AAA,
pack of 3
Ref. S15600



soft case for
S12250, S12255,
S12350, S12355,
S12450, S12455
Ref. S11962

soft case for
S12550, S12555,
S12650, S12655
Ref. S11963

(2): internal remark