

# CLASSICUS

## INAMI SLIT LAMP



SLIT LAMP CLASSICUS L-0169 ~ L-0219

### Specifications of L-0169

<b>●MICROSCOPE</b>	
Type:	Greenough Type Stereoscopic Microscope
Magnification Changer:	2 steps by changing Objective Lens
Eyepieces:	10X(16X)
Total Magnifications:	10X, 16X(16X, 25.6X)
Field of View:	20.13mm(16.10mm)
Pupillary Adjustment:	52-90mm
Focus Distance:	100 mm
Diopter Adjustment:	±6D
<b>●SLIT ILLUMINATION</b>	
Slit Width:	0-10mm
Aperture Diameter:	0.2, 1, 3, 4, 6, 10mm
Slit Length:	0-10mm
Slit Rotation:	±90°
Filters:	Cobalt blue, Heat absorption, Red-free, 1/2ND
Slit Inclination:	5° 10° 15° 20°
Lamp:	12V/50W Halogen Lamp(L0160H1)
<b>●BASE</b>	
Vertical Movement:	30mm
Longitudinal Movement:	70mm
Lateral Movement:	115mm
Fine Base Movement:	±10mm
<b>●CHINREST</b>	
Vertical Movement:	75mm
Fixation Target:	Tungsten lamp 6V 0.15A
Input Voltage:	AC.100, 110, 220, 240V 50/60Hz
Power Consumption:	50VA
<b>●DIMENSION &amp; WEIGHT</b>	
Weight:	20.5kgs
Dimension:	550(W)x350(D)x500(H)



**L - 1BW**  
GREENOUGH TYPE MAGNIFICATION



**OCL -006**  
EYE PIECES 10X



**OCL -002**  
EYE PIECES 16X

### Specifications of L-0219

<b>●MICROSCOPE</b>	
Type:	Galilean-Type Binocular Microscope
Magnification Changer:	5 Steps by drum rotation
Eyepieces:	12.5X
Total Magnifications:	6, 10, 16, 25, 40X
Field of View:	38,24,15,9,6mm
Pupillary Adjustment:	48-78mm
Focus Distance:	100 mm
Diopter Adjustment:	+5D - -6D



**MS-4**  
5 STEPS MAGNIFICATION  
(6, 10, 16, 25, 40X)



**OCL -004**  
EYE PIECES 12.5X

### Specifications of L-0179

<b>●MICROSCOPE</b>	
Type:	Galilean-Type Binocular Microscope
Magnification Changer:	3 Steps by drum rotation
Eyepieces:	15X
Total Magnifications:	10, 16, 25X
Field of View:	28.5, 14, 7mm
Pupillary Adjustment:	48-78mm
Focus Distance:	100 mm
Diopter Adjustment:	±6D



**OCL -009**  
EYE PIECES 15X



**MS-51**  
3 STEPS MAGNIFICATION  
(10, 16, 25X)

### Specifications of L-0179Z

<b>●MICROSCOPE</b>	
Type:	Galilean-Type Binocular Microscope
Magnification Changer:	Continuous Zoom by drum rotation
Eyepieces:	15X
Total Magnifications:	10X - 30X
Field of View:	22mm-8mm
Pupillary Adjustment:	48-78mm
Focus Distance:	100 mm
Diopter Adjustment:	±6D



**ZS-3-SL**  
ZOOM MAGNIFICATION  
(10X- 30X)



**OCL -009**  
EYE PIECES 15X



●Specifications subject to change without prior notice.



The INAMI CLASSICUS SERIES SLIT LAMPS provides practitioners with the utmost satisfaction thanks to its excellent image clearness and fine design.

L-0169 INAMI CLASSICUS GREENOUGH TYPE SLIT LAMP

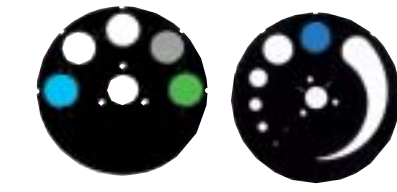


HALF MOON TYPE STAGE can be available for Laser Systemes.

L-0219 INAMI CLASSICUS 5 STEPS MAGNIFICATION SLIT LAMP



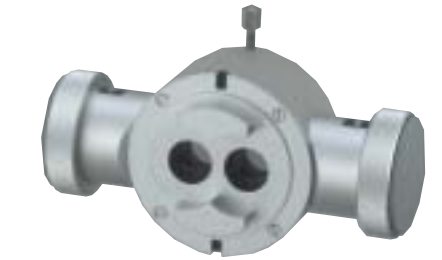
YF-57 SPECIAL ADAPTOR BUILT-IN YELLOW FILTER



VARIOUS KINDS OF BUILT-IN FILTERS: COBALT BLUE, RED-FREE, 50%ND AND HEAT ABSORPTION FILTERS



L-0179 INAMI CLASSICUS 3 STEPS MAGNIFICATION SLIT LAMP



L-0541 BEAM SPLITTER

L-0179Z INAMI CLASSICUS ZOOM MAGNIFICATION SLIT LAMP



L-0544 TV CAMERA ADAPTER(f=48, 70, 100mm)





**Inami & Co., Ltd.**

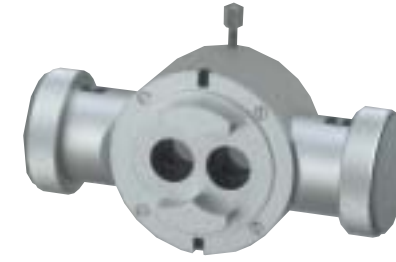
# CLASSICUS

INAMI SLIT LAMP

SLIT LAMP CLASSICUS L-0169 ~ L-0219



L-0179 INAMI CLASSICUS  
3 STEPS MAGNIFICATION SLIT LAMP



L-0541  
BEAM SPLITTER



L-0179Z INAMI CLASSICUS  
ZOOM MAGNIFICATION SLIT LAMP



L-0544  
TV CAMERA ADAPTER(f=48, 70, 100mm)

