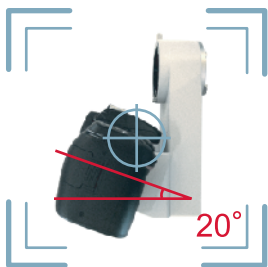


Got **your own** Digital SLR ?



*The depiction of the picture above is different from actual functions.

If you own a Digital Single Lens Reflex camera, why not digitize your slit lamp microscope with it? Our Digital Camera Adaptor L-0551 allows you to attach your own digital SLR camera to slit lamp easily. Just take advantage from what you already have or from the latest technology of digital SLR cameras.



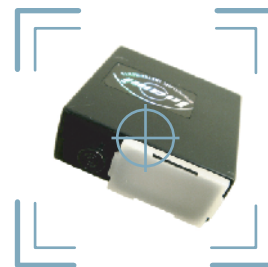
Angled connection

L-0551 adopts a 20 degrees angled connection point to camera so that users can view the preview screen comfortably.



Remote shutter

For users' ease of capturing most needed moments in the observation, L-0551 equips with a remote shutter.



Speed light

The xenon synchronizing speed light allows users to take clear and bright images. It is ideal for taking mydriatic images.



Flexible compatibility

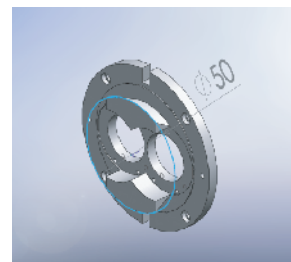
L-0551 is compatible to most major digital SLR cameras. Even if your camera is not on the chart, please contact us to confirm.

COMPATIBILITY

*Cameras are not included.

CANON		NIKON	
RS60E3(4-1)	RS80N3(4-2)	MC 30(4-3)	MC DC1(4-4)
EOS-1Ds Mark III	Digital Rebel XT	Nikon D3	Nikon D80
EOS-1D Mark III	Digital Rebel XTi	Nikon D2XS	Nikon D40X
EOS 5D Digital	Digital Rebel XSi	Nikon D2HS	Nikon D40
EOS 40D Digital		Nikon D300	
EOS 30D Digital		Nikon D200	
EOS-1Ds Mark II		Nikon D2X	Nikon D70
EOS-1D Mark II		Nikon D1X	Nikon D70S
EOS-1D Mark II N		Nikon D2H	Nikon D50
EOS-1Ds		Nikon D1H	
EOS-1D		Nikon D100	
EOS 20D Digital			
EOS 10D Digital			
EOS D60 Digital			
EOS D30 Digital			

For models not on this chart, or other manufacturers', please contact us.



Diameter of connection ring to slit lamp is 50mm.



L-0551 is attachable to most of Inami goldman model slit lamp apart from Greenough type.

*Design and specification are subject to change.